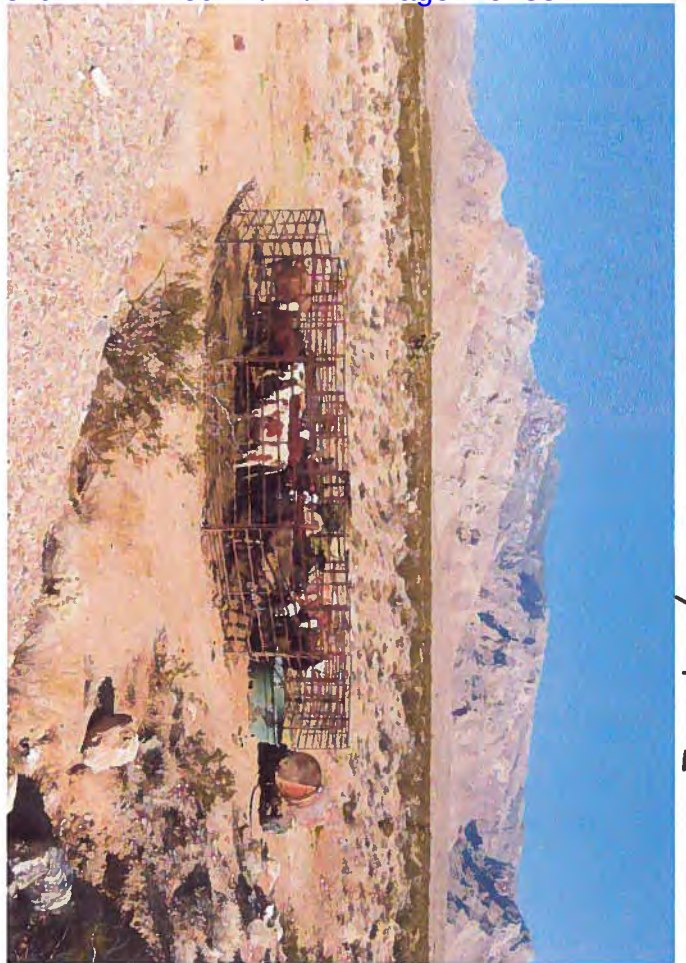
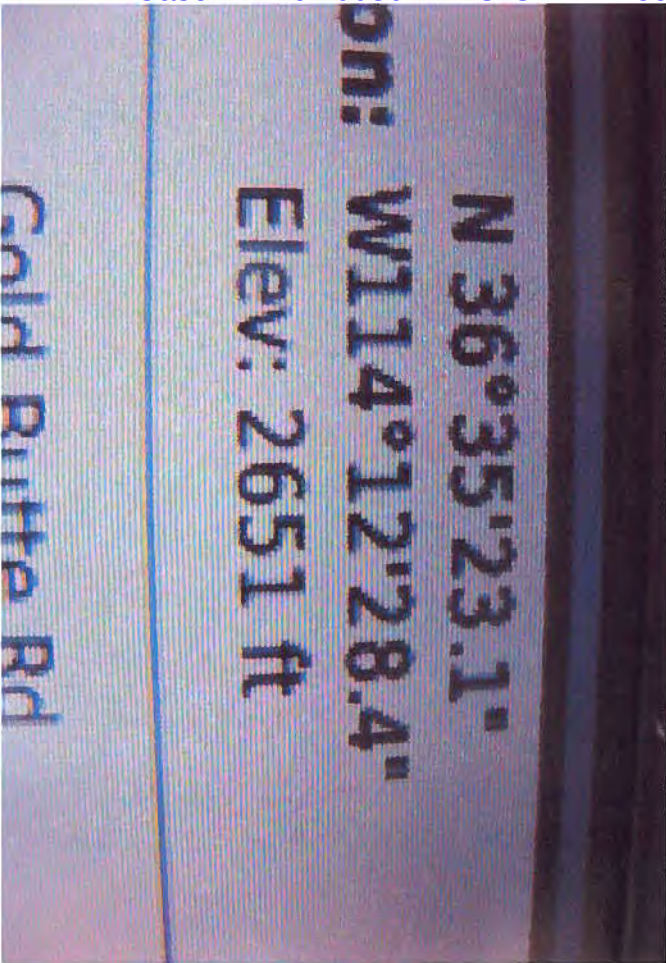


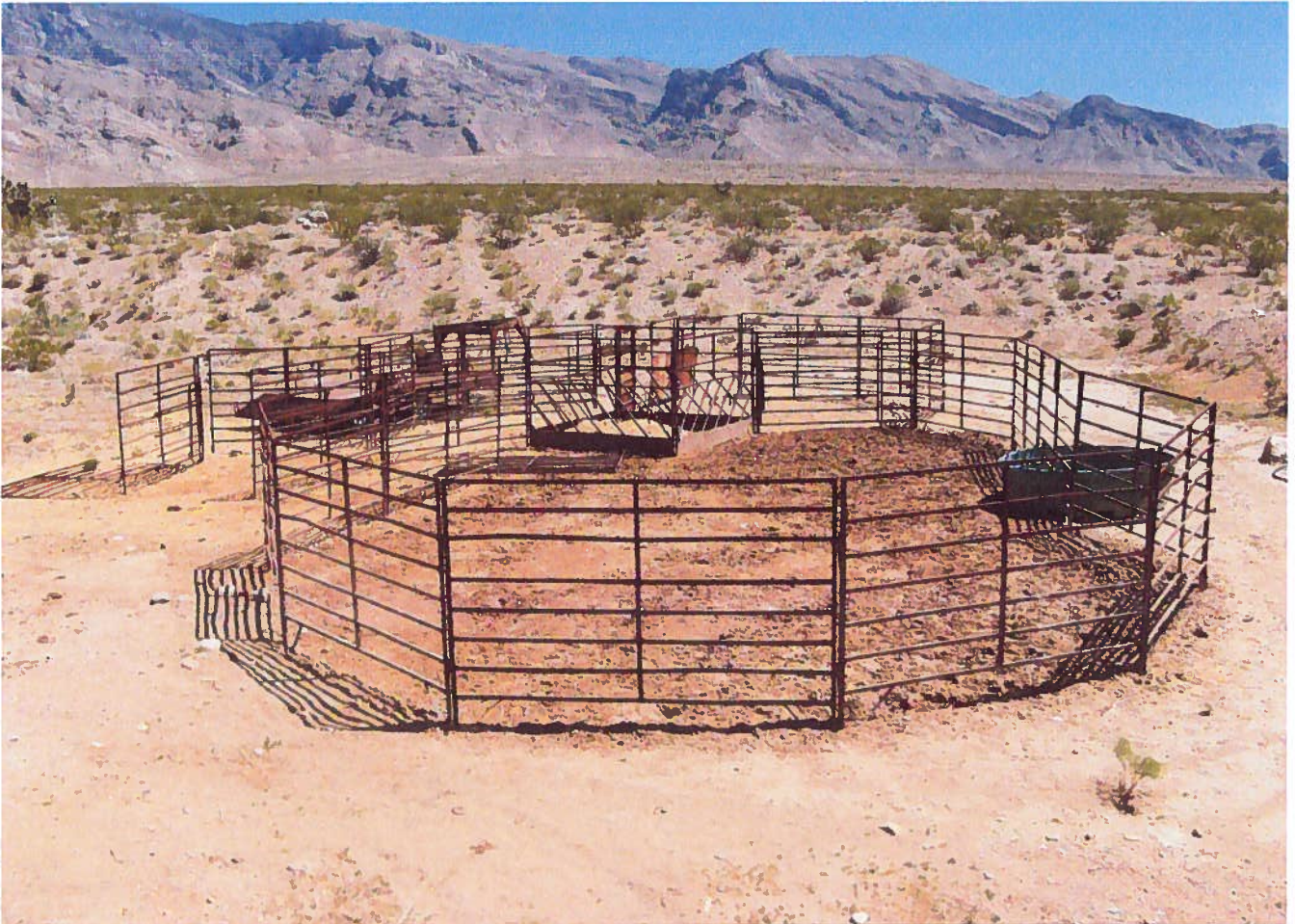
ATTACHMENT K



02/26/2012

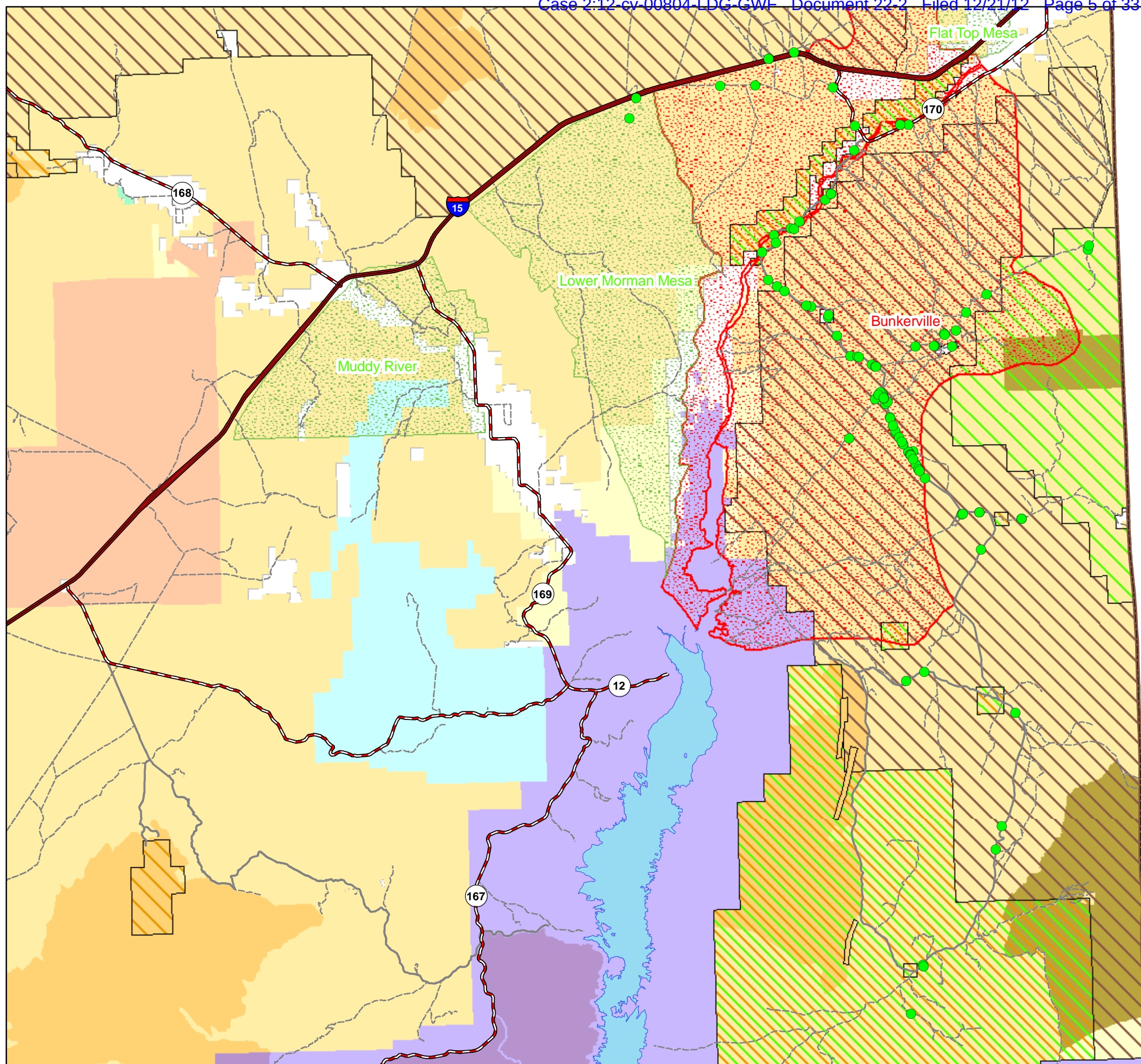


04/17/2012



ATTACHMENT L

Gold Butte Points



Legend

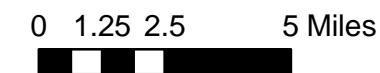
- GPS Location
- Southern Nevada District Office
- Grazing Allotment
- Historical Grazing Allotment

ACEC

- Biological
- Cultural
- Cultural/Biological
- Desert Tortoise
- BLM Wilderness
- BLM Wilderness Study Area
- National Park Wilderness

Land Status

- Bureau of Indian Affairs
- Bureau of Land Management
- Bureau of Reclamation
- City of Las Vegas
- Clark County, NV
- Department of Defense
- Department of Energy
- Fish and Wildlife Service
- Forest Service
- National Park Service
- Nevada State
- Private



No warranty is made by the Bureau of Land Management as to the accuracy, reliability, or completeness of these data for individual or aggregate use with other data. Original data were compiled from various sources. This information may not meet National Map Accuracy Standards. This product was developed through digital means and may be updated without notification.

Ex. 7 - Sullivan Dec. Att. L - Page 1 of 1



ATTACHMENT M

Cattle Trespass Observations 2012, emphasis on Bundy II

D. Sullivan, #174

DATE and TIME	LOCATION	OBSERVATION
04/17/2012 1200 hrs	N36 44'29.3" W114 10'56.0"	22 cattle, Bundy Ear Marks identifiable with binoculars
05/27/2012 1538 hrs	N36 44'21.1" W114 11'17.8"	66 cattle (6 calves), Bundy Ear Marks identifiable with binoculars
1608 hrs	N36 35' 26.2" W114 12'24.6" Former Bunkerville Allotment	7 cattle plus 3 calves, Bundy Ear Marks, Added green ear tags.
07/05/2012 1500 hrs	N36 44'21.2" W114 11' 17.8"	3 cattle plus 4 calves, 2 with Bundy Ear Marks, 1 with Bundy brand
1507 hrs	N36 44'19.6" W114 11'49.2"	5 cattle plus 4 calves, 3 with Bundy Ear Mark
1540 hrs	N 36 38'25.0" W114 15'18.3" Former Bunkerville Allotment	4 cattle plus 3 calves, 2 Bundy brand, 1 Bundy Ear Mark, 1 not visible. Fresh salt lick.
07/12/2012 0730 hrs	N36.74131 W114.18253	12 cattle plus 2 calves. 5 with Bundy Ear Mark visible
07/15/2012 1500 hrs	N36 44'46.6" W114 10' 34.6"	12 cattle plus 1 calf. 2 Bundy Ear Mark visible
07/17/2012 1140 hrs	Mockingbird Spring (N36 15'46.6" W114 17'35.3")	14 cattle plus 3 heifers plus 5 calf/cow pair. 1 Bundy Ear Mark, 1 Bundy brand and Ear Mark. Majority not visible.
1158 hrs	Maynard Spring (N36 15'37.4" W114 18'16.6")	1 cow with Bundy brand and ear marks. Requires veterinary attention. Appears to have prolapsed uterus
1300 hrs	Agua Chiquita Spring (N36 14'46.1" W114 18'33.3")	2 bulls
1405 hrs	N36 15'49.2" W114 13'31.5"	12 cattle plus 2 calves. 1 Bundy Ear Mark. Majority not visible.
07/23/2012 1320 hrs	Mockingbird Spring	14 cattle plus 2 calves. 2 Bundy Ear Mark. Majority not visible.
1357 hrs	N36 14'50.3" W114 18'14.2"	Resource damage: Damaged and denuded area from cattle trampling.
1410 hrs	N36 14'44.5" W114 19'48.1"	Resource damage: Damaged and denuded area from cattle trampling. (Catclaw Wash)
1630 hrs	Mockingbird Spring	Bundy "V over O" brand, 3 cattle in photo. Img 0037
1631 hrs	Mockingbird Spring	Bundy brand, 5 cattle in photo. Img 0040
1659 hrs	Mockingbird Spring	Bundy Ear Marks, 3 cattle in photo. Img 0088
1805 hrs	Mockingbird Spring	Bundy Ear Marks, 1 cow in photo. Img 0145
1807 hrs	Mockingbird Spring	Bundy Ear Marks, 4 cattle in photo. Img 0146
07/24/2012 0835 hrs	Mockingbird Spring	Bundy brand, 1 cow in photo. Img 0180
0941 hrs	Mockingbird Spring	Bundy Ear Marks, 4 cattle in photo. Img 0231
0946 hrs	Mockingbird Spring	Bundy brand and earmarks, 5 cattle in photo. Img 0236
1345 hrs	Mockingbird Spring	Bundy brand, 2 cattle in photo. Img 0293
1634 hrs	Mockingbird Spring	Bundy brand, 2 cattle in photo. Img 0332
1650 hrs	Mockingbird Spring	Bundy Ear Marks, 2 cattle in photo. Img 0342
1758 hrs	Mockingbird Spring	Bundy Ear Marks, 2 cattle in photo. Img 0388
07/25/2012 0831 hrs	Mockingbird Spring	Bundy Ear Marks, 2 cattle in photo. Img 0427
0833 hrs	Mockingbird Spring	Bundy Ear Marks, 1 cow in photo. Img 0431
1733 hrs	Mockingbird Spring	Bundy brand, 2 cattle in photo. Img 0650
07/26/2012 0632 hrs	Mockingbird Spring	Bundy Ear Marks, 3 cattle in photo. Img 0699
0737 hrs	Mockingbird Spring	Bundy Ear Marks, 1 cow in photo. Img 0742
0916 hrs	Mockingbird Spring	Bundy Ear Marks, 4 cattle in photo. Img 0754
1125 hrs	Mockingbird Spring	Bundy Ear Marks, 1 cow in photo. Img 0758

Cattle Trespass Observations 2012, emphasis on Bundy II

D. Sullivan, #174

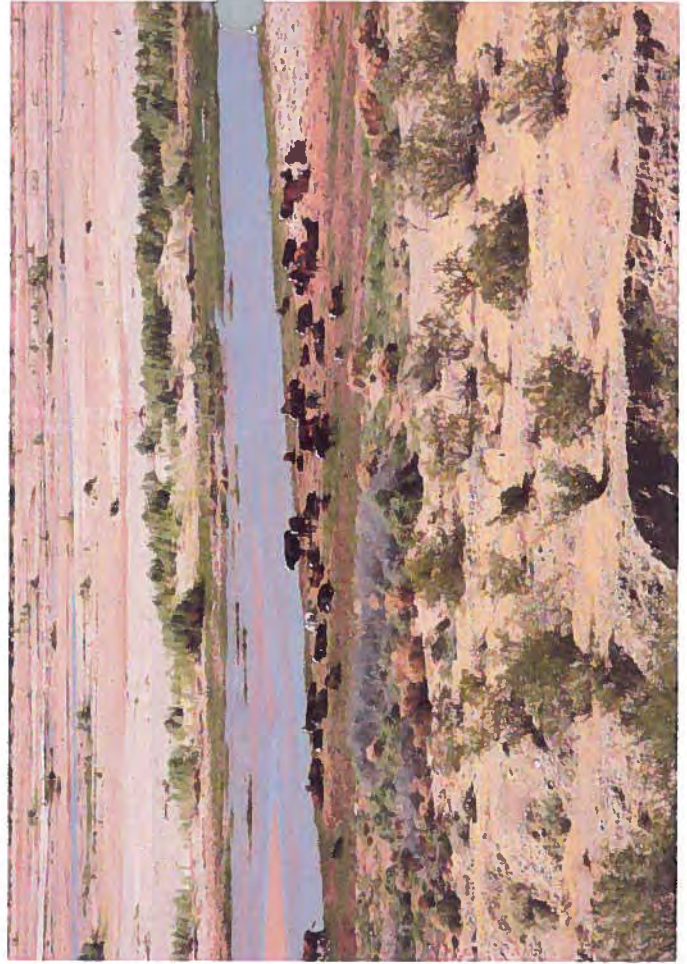
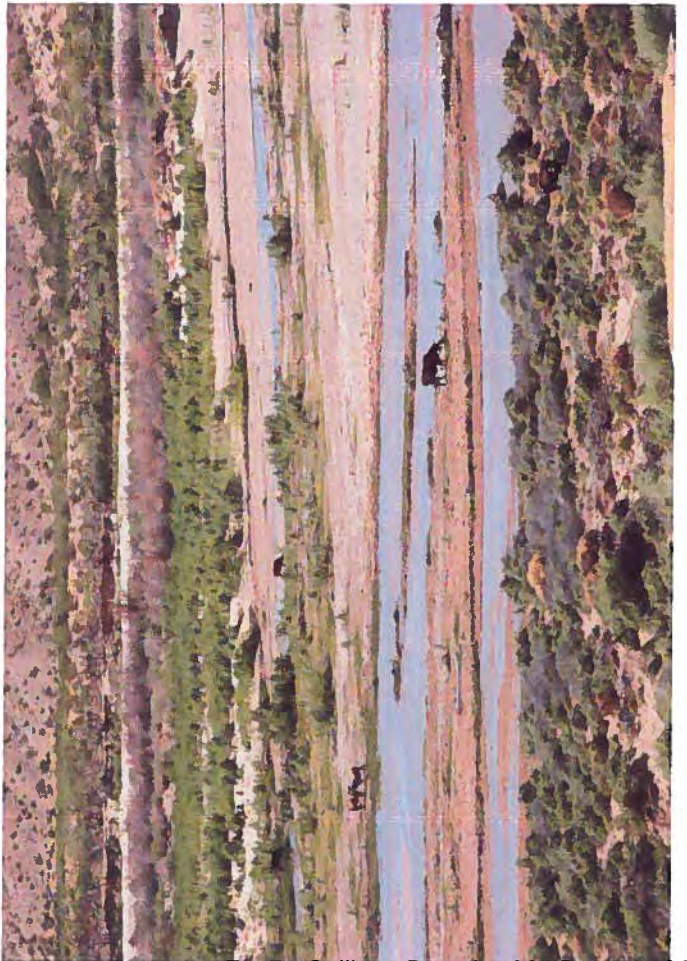
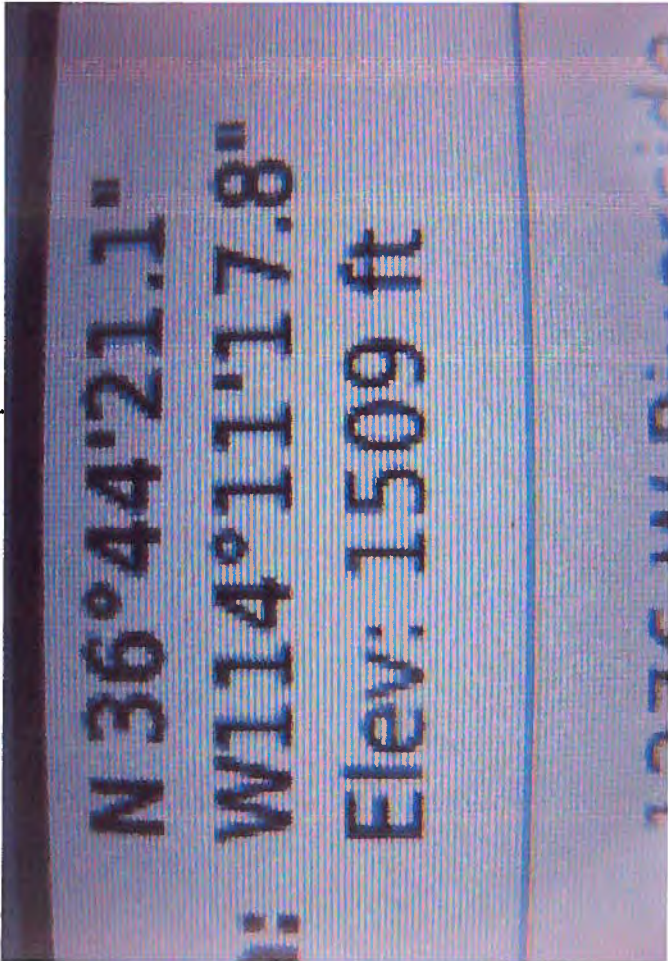
1154 hrs	Mockingbird Spring	Bundy Ear Marks, 4 cattle in photo.	Img 0778
1735 hrs	Mockingbird Spring	Bundy Ear Marks, 3 cattle in photo.	Img 0980
07/27/2012 0757 hrs	Mockingbird Spring	Bundy Ear Marks, 1 cow in photo.	Img 1019
07/28/2012 0809 hrs	Mockingbird Spring	Bundy Ear Marks, 4 cattle in photo.	Img 1086
0811 hrs	Mockingbird Spring	Bundy Ear Marks, 2 cattle in photo.	Img 1089
1439 hrs	Mockingbird Spring	Bundy Ear Marks, 2 cattle in photo.	Img 1337
1601 hrs	Mockingbird Spring	Bundy Ear Marks, 4 cattle in photo.	Img 1364
1623 hrs	Mockingbird Spring	Bundy Ear Marks, 2 cattle in photo.	Img 1374
1630 hrs	Mockingbird Spring	Bundy Ear Marks, 2 cattle in photo.	Img 1388
1651 hrs	Mockingbird Spring	Bundy brand, 4 cattle in photo.	Img 1401
1713 hrs	Mockingbird Spring	Bundy Ear Marks, 4 cattle in photo.	Img 1410
07/30/2012 0721 hrs	Mockingbird Spring	Bundy Ear Marks, 1 cow in photo.	Img 1497
0724 hrs	Mockingbird Spring	Bundy Ear Marks, 1 cow in photo.	Img 1502
0728 hrs	Mockingbird Spring	Bundy Ear Marks, 2 cattle in photo.	Img 1506
0743 hrs	Mockingbird Spring	Bundy brand and earmarks, 5 cattle in photo.	Img 1521
08/01/2012 0945 hrs	N36 33.293' W114 11.385' Former Bunkerville Allotment	2 cattle plus 8 calf/cow pair. 2 Bundy brand and Ear Marks, 8 Bundy Ear Marks,	
1100 hrs	N36 17.016' W114 11.658'	1 bull, no markings visible. Resource damage: Damaged and denuded area from cattle trampling. (Gold Butte Townsite)	
08/02/2012 0820 hrs	Mockingbird Spring	Bundy brand and earmarks, 8 cattle in photo.	Img 0044
0821 hrs	Mockingbird Spring	SAME animal Bundy brand and earmarks, 11 cattle in photo.	Img 0045
0827 hrs	Mockingbird Spring	Bundy brand, 11 cattle in photo.	Img 0061
0841 hrs	Mockingbird Spring	Bundy Ear Mark, 8 cattle in photo.	Img 0086
1430 hrs	Mockingbird Spring	Bundy Ear Mark, 2 cattle in photo.	Img 0164
1445 hrs	Mockingbird Spring	Bundy brand, 3 cattle in photo.	Img 0189
1650 hrs	Mockingbird Spring	Bundy brand, 2 cattle in photo.	Img 0288
08/03/2012 1759 hrs	Mockingbird Spring	Mel Bundy – ranching	Img 0390
1759 hrs	Mockingbird Spring	Cliven Bundy – ranching	Img 0391
08/04/2012 0938 hrs	Mockingbird Spring	Bundy Ear Mark, 4 cattle in photo.	Img 0429
1203 hrs	Mockingbird Spring	Bundy brand, 2 cattle in photo.	Img 0470
1341 hrs	Mockingbird Spring	Bundy Ear Marks, 1 cow in photo.	Img 0520
1354 hrs	Mockingbird Spring	Bundy Ear Marks, 1 cow in photo.	Img 0535
1645 hrs	Mockingbird Spring	Bundy brand, 4 cattle in photo.	Img 0634
08/06/2012 1308 hrs	Mockingbird Spring	Bundy Ear Marks, 1 cow in photo.	Img 0736
1310 hrs	Mockingbird Spring	Bundy brand, 1 cow in photo.	Img 0739
1641 hrs	Mockingbird Spring	Bundy Ear Marks, 1 cow in photo.	Img 0839
1727 hrs	Mockingbird Spring	Bundy Ear Marks, 1 cow in photo.	Img 0877
1732 hrs	Mockingbird Spring	Bundy brand, 1 cow in photo.	Img 0879
08/08/2012 0912 hrs	Mockingbird Spring	Bundy Ear Mark, 8 cattle in photo.	Img 0955
1015 hrs	Mockingbird Spring	Bundy Ear Mark, 2 cattle in photo.	Img 1024
1015 hrs	Mockingbird Spring	Bundy brand, 1 cow in photo.	Img 1026
1022 hrs	Mockingbird Spring	Bundy Ear Mark, 4 cattle in photo.	Img 1037
1628 hrs	Mockingbird Spring	Bundy brand and earmarks, 4 cattle in photo.	Img 1307
1634 hrs	Mockingbird Spring	Bundy brand, 4 cattle in photo.	Img 1319

Cattle Trespass Observations 2012, emphasis on Bundy II

D. Sullivan, #174

Filename: Attachment M - Trespass Observations 4-17-12 thru 8-9-12
Directory: S:\WP\ZAHEDI\Litigation\Cliven Bundy\US v Bundy - 2012 Trespass
Litigation (Bundy II)\Declarations\Deboarah Sullivan Declararation & Attachments
Template: C:\Documents and Settings\james.hines\Application
Data\Microsoft\Templates\Normal.dotm
Title: Cattle Trespass Observations 2012, emphasis on Bundy II
Subject:
Author: Sullivan, Deborah J
Keywords:
Comments:
Creation Date: October 22, 2012 2:15:00 PM
Change Number: 3
Last Saved On: November 2, 2012 3:04:00 PM
Last Saved By: nancy.zahedi
Total Editing Time: 4 Minutes
Last Printed On: December 17, 2012 4:58:00 PM
As of Last Complete Printing
Number of Pages: 4
Number of Words: 1,187 (approx.)
Number of Characters: 6,766 (approx.)

05/27/2012 1538 hrs. 66 cattle



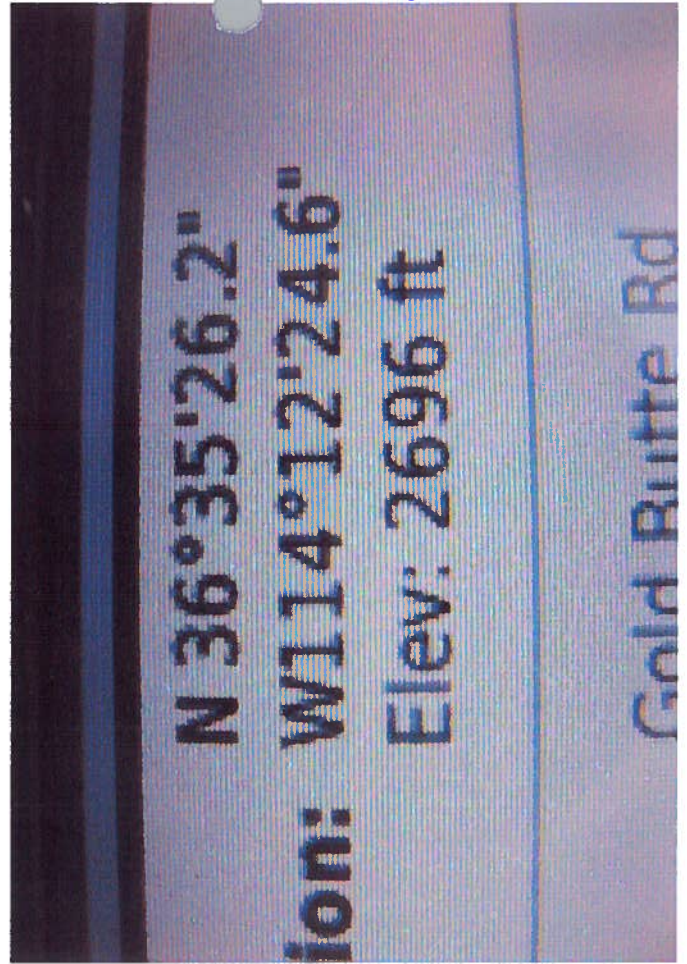
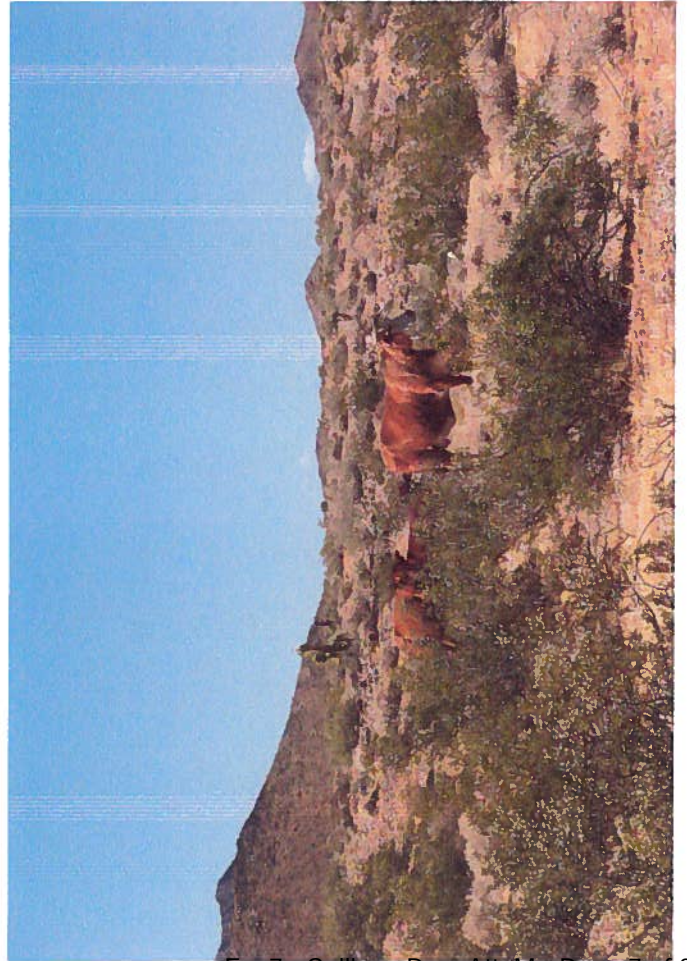
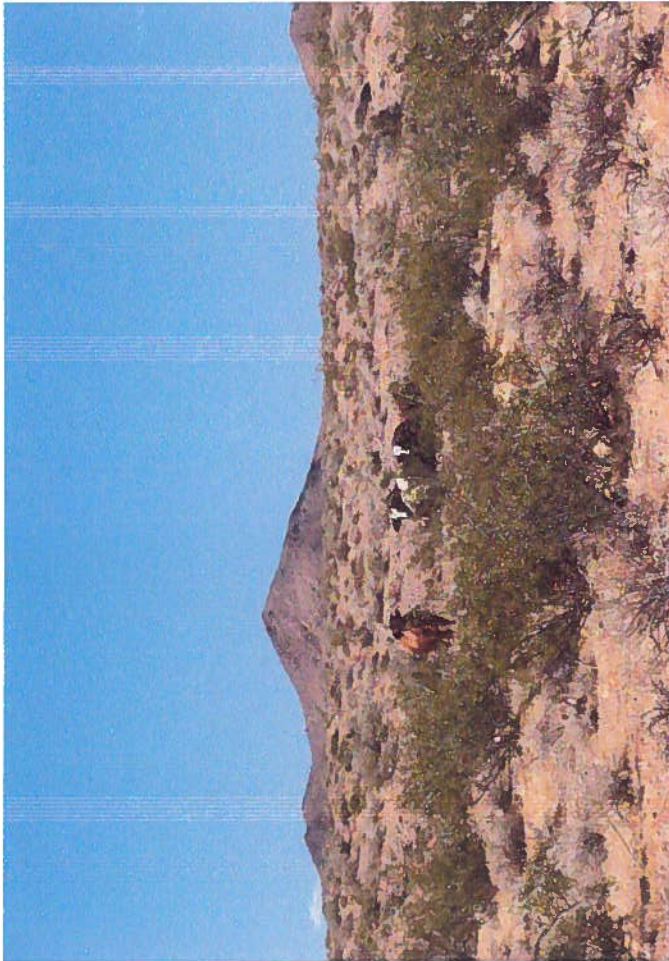
Bunkerville Allotment

05/27/2012 1608 hrs.

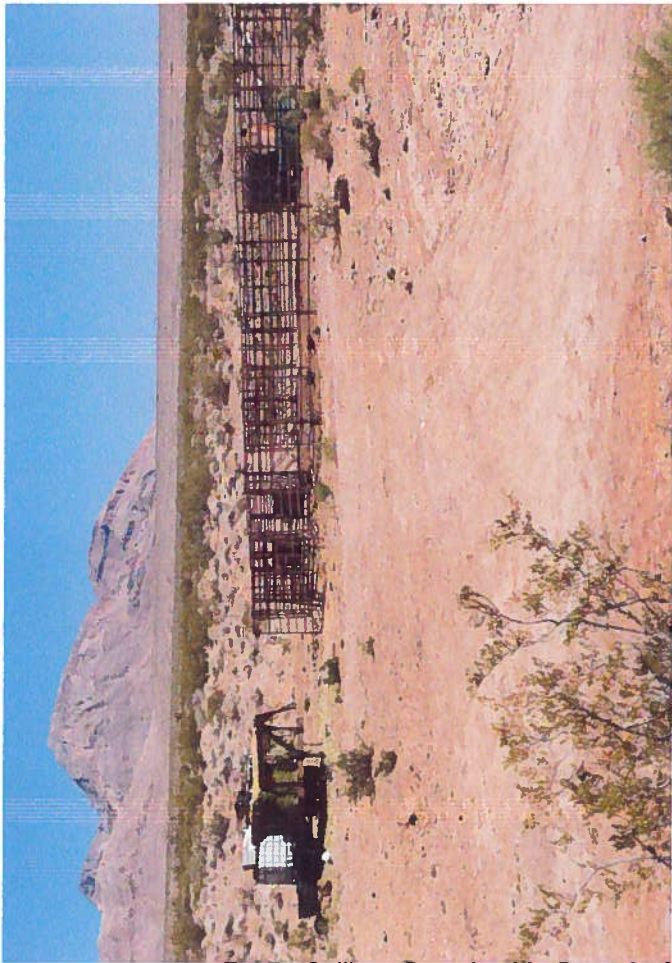
7 cattle

3 calves

Bundy car marks



05/27/2012 1612 hrs. Bunkerite Allotment - Resource Damage - vegetation



07/15/2012 1500 hrs 3 cattle, 4 calves

N 36°44'21.2"
W 114°11'17.8"
Elev: 15442 ft

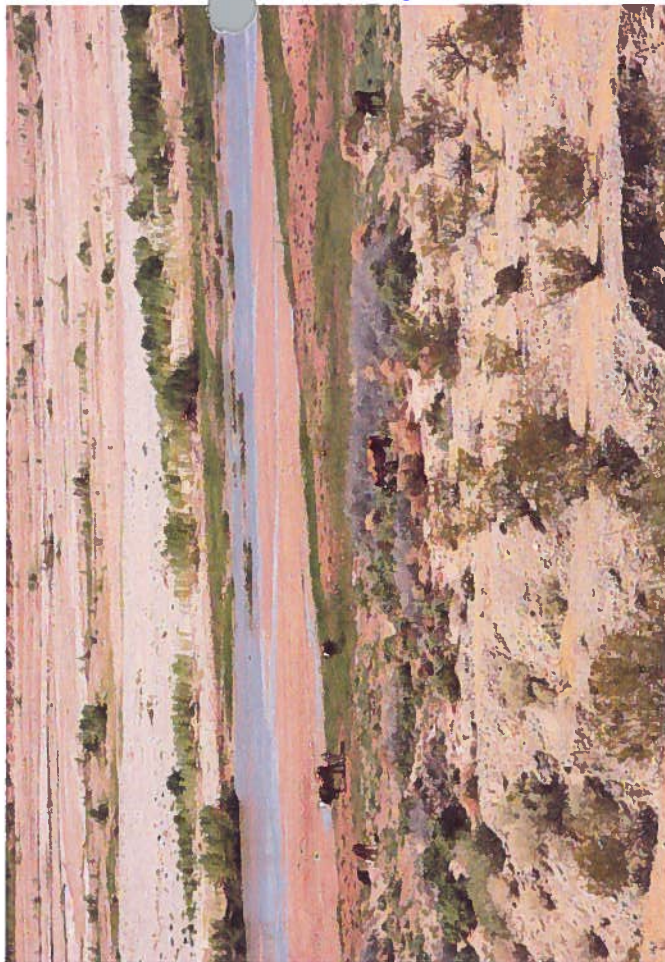
1000 W Diverside R



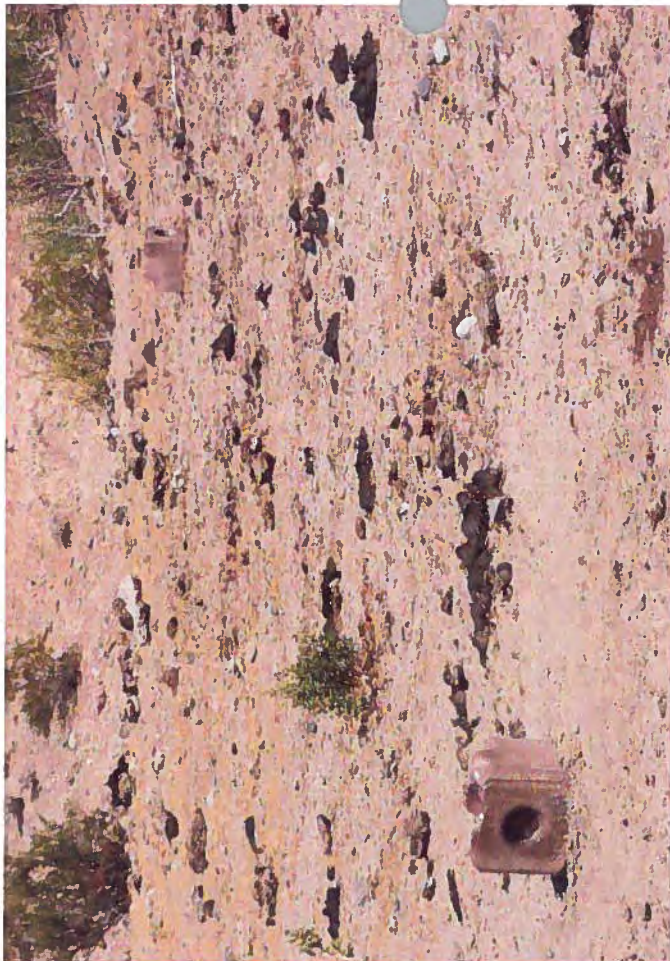
1507 hrs 5 cattle, 4 calves

N 36°44'19.6"
W 114°11'49.2"
Elev: 14775 ft

1000 W Diverside R

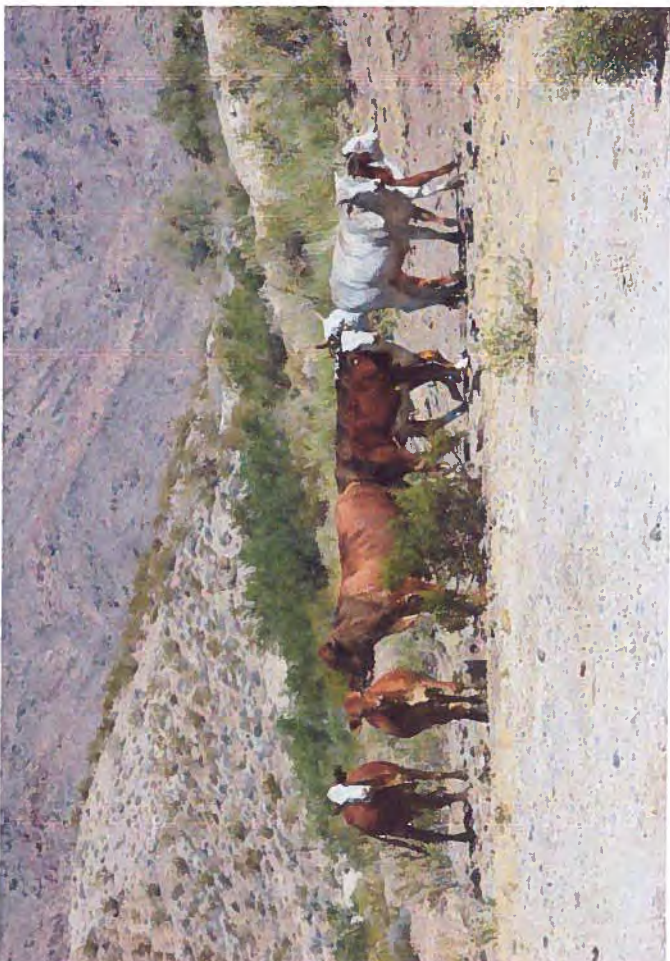
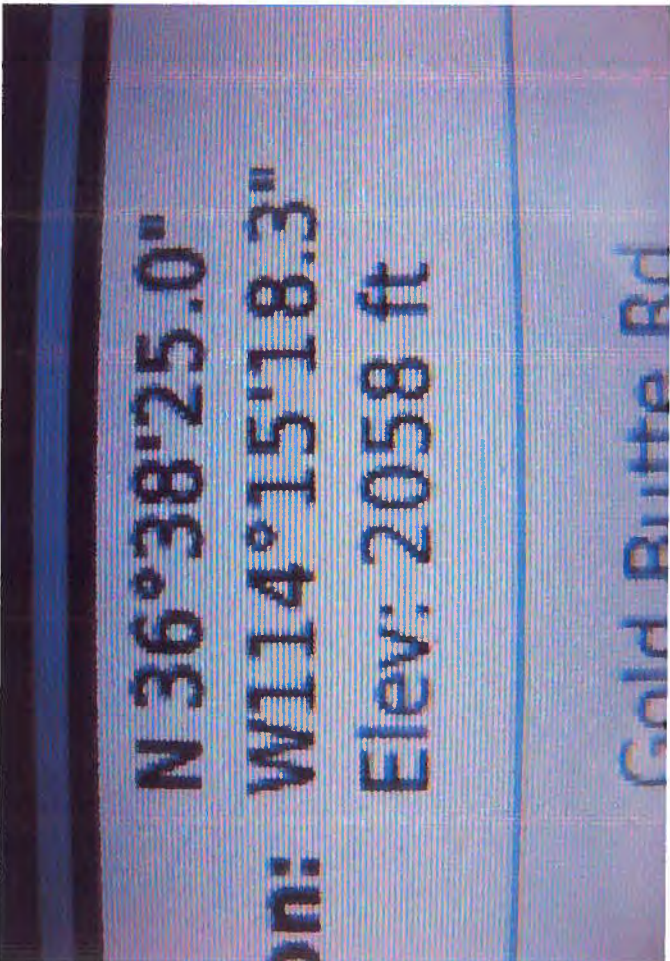


4 cattle, 3 calves - Mineral blocks



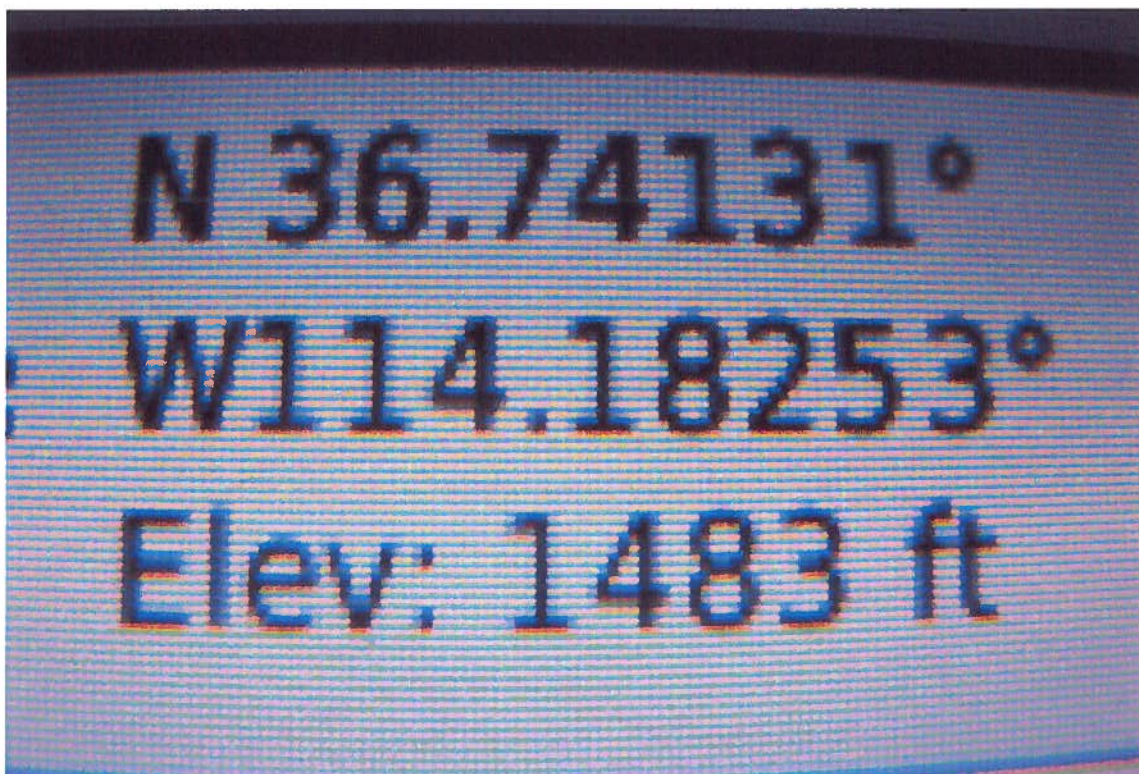
Dunkerive Allotment

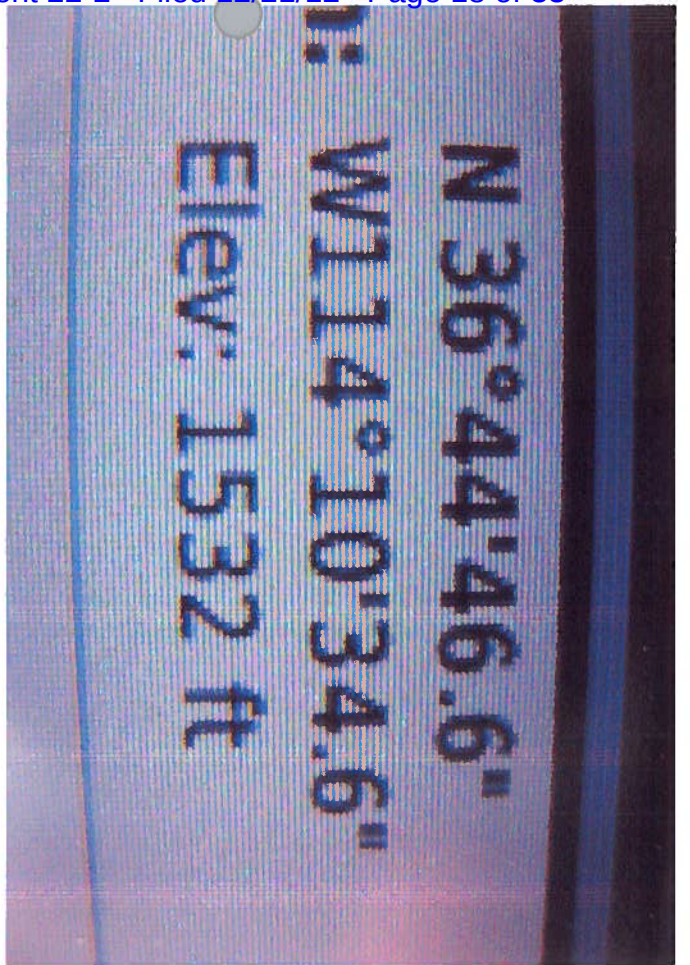
07/05/2012 1540 hrs



07/12/2012

12 cattle, 2 calves, 5 with Bundy
earmark





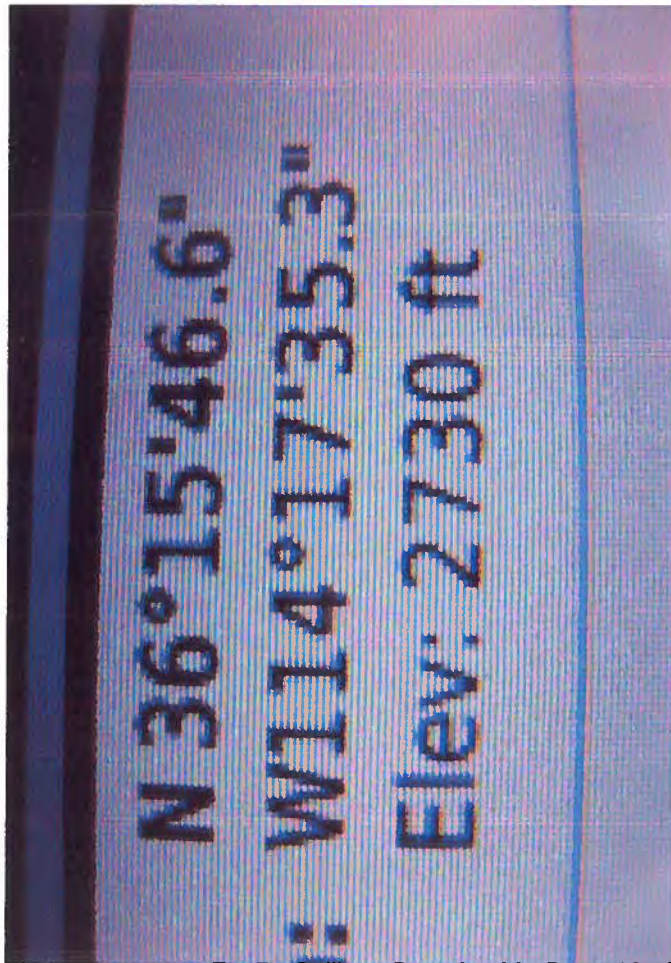
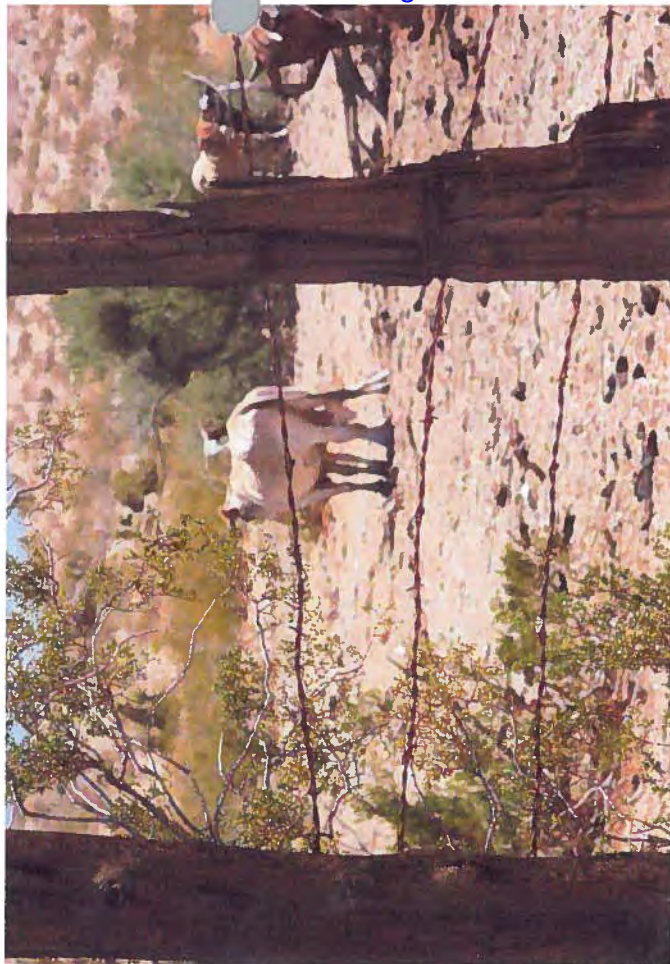
07/15/2012 1500 hrs
 12 cattle, 1 calf
 2 Bundy car mark visible



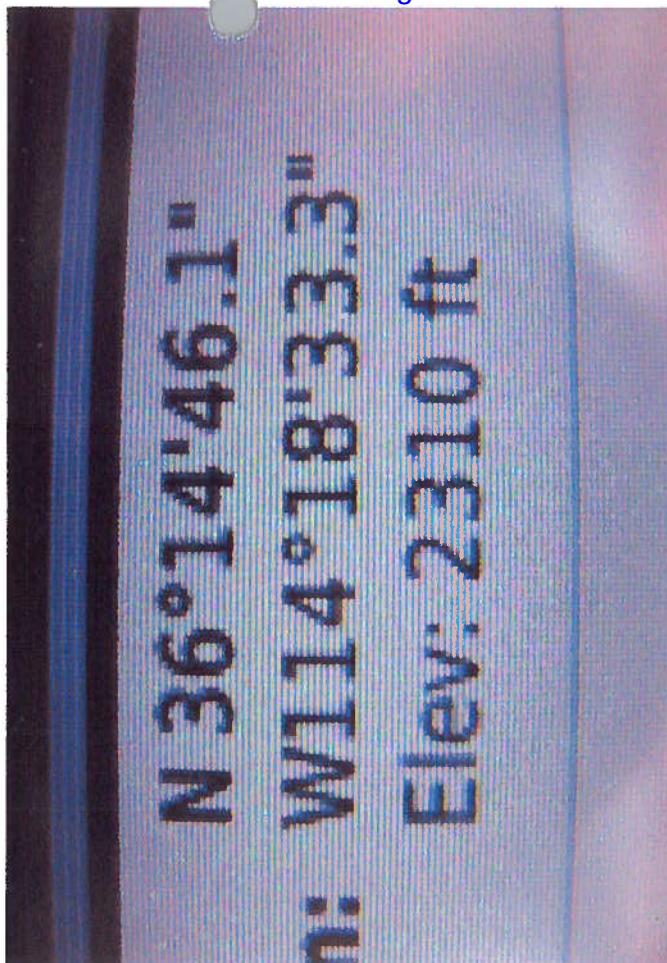
07/17/2012 1140 hrs

14 cattle, 3 heifers, plus 5 cat/cow

1 Bundy brand + ear mark
(majority not visible)



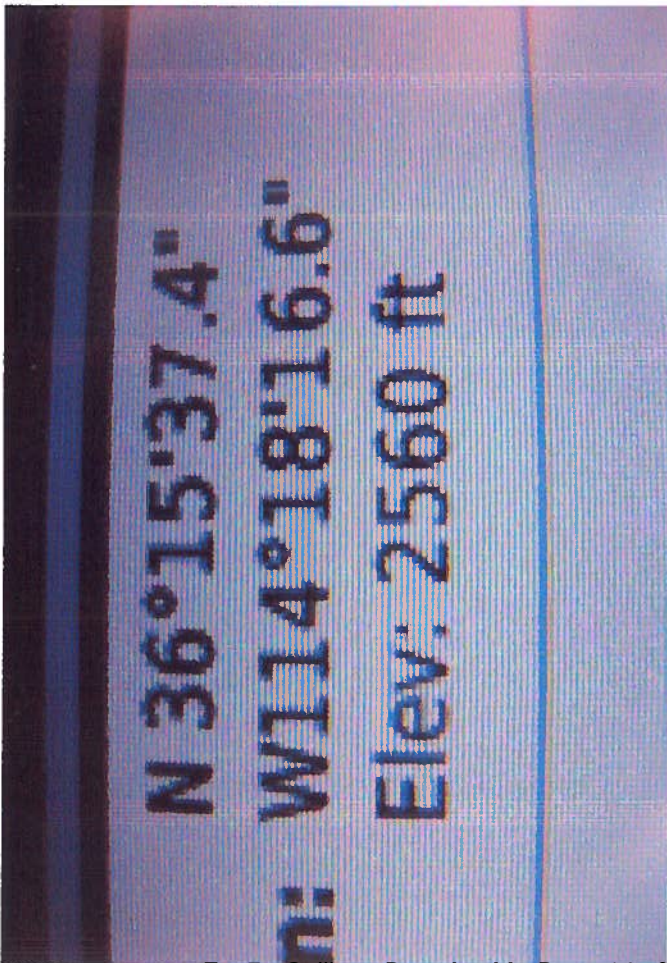
1300 hrs.



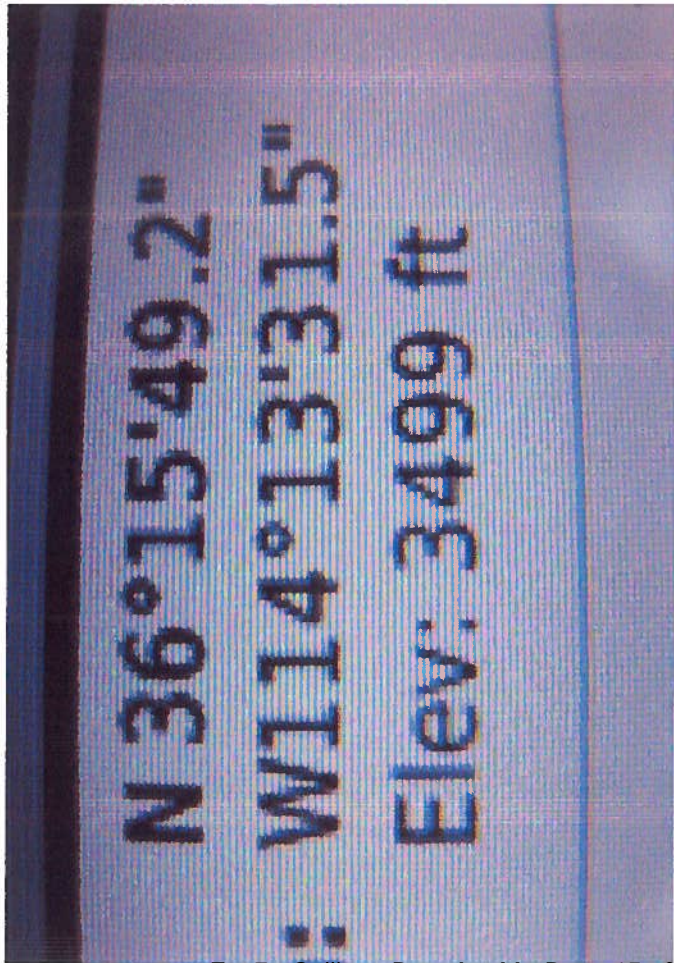
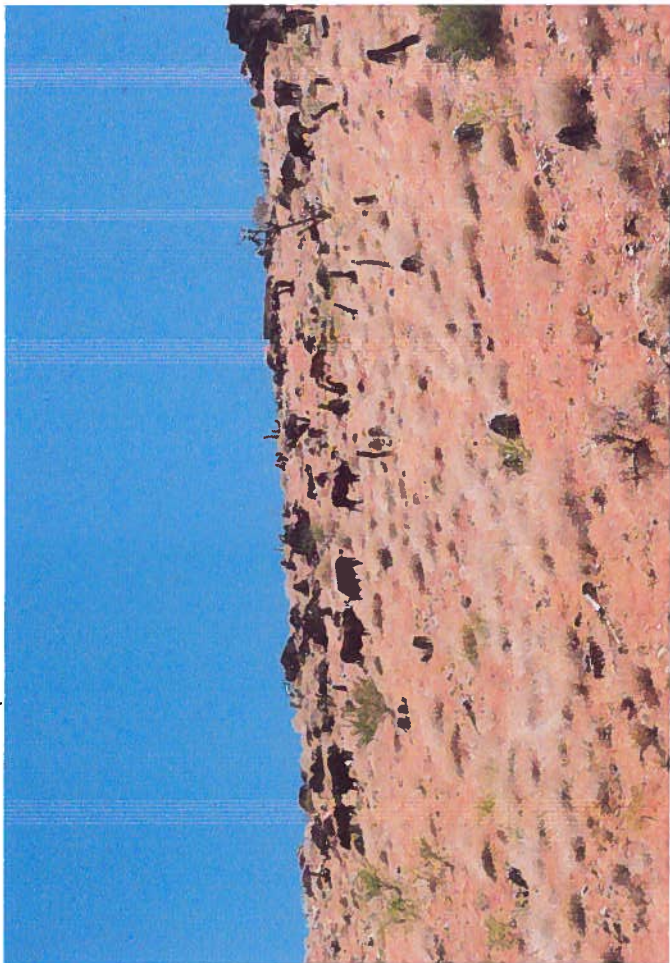
Budy brand + earmarks

1158 hrs

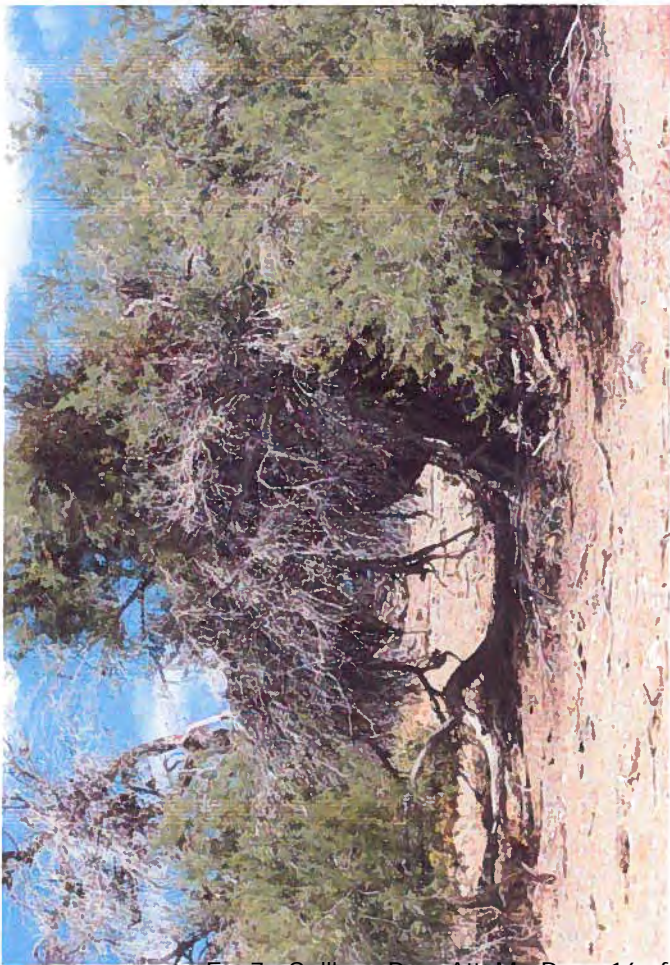
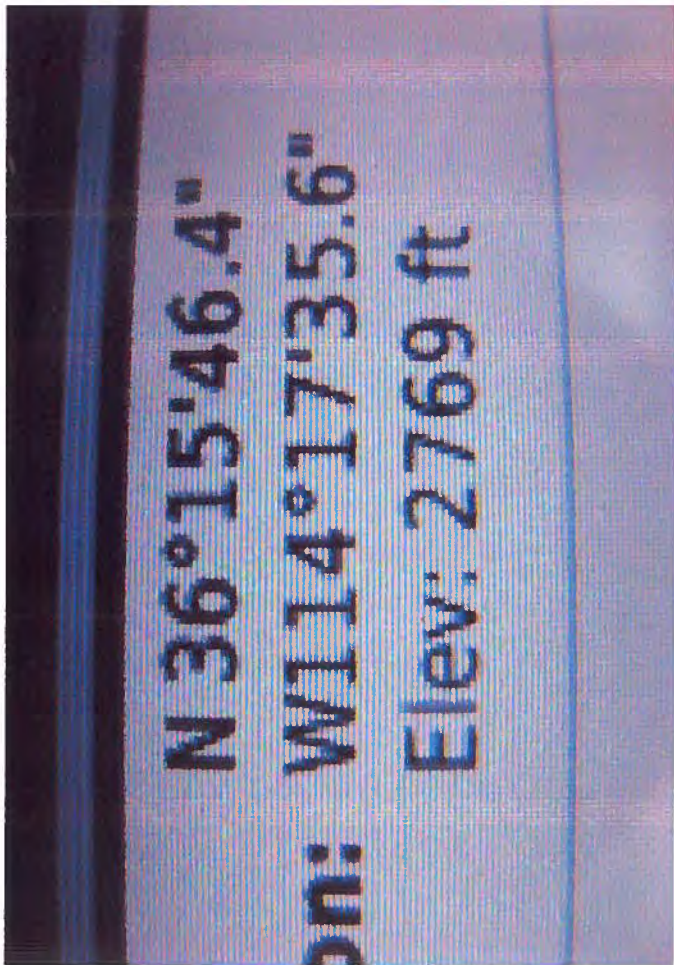
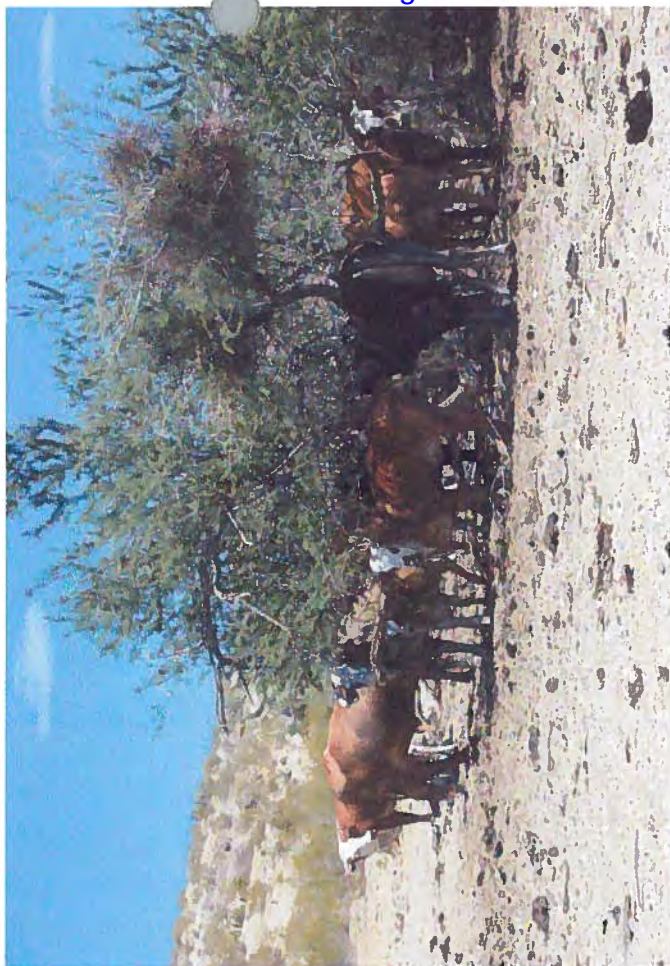
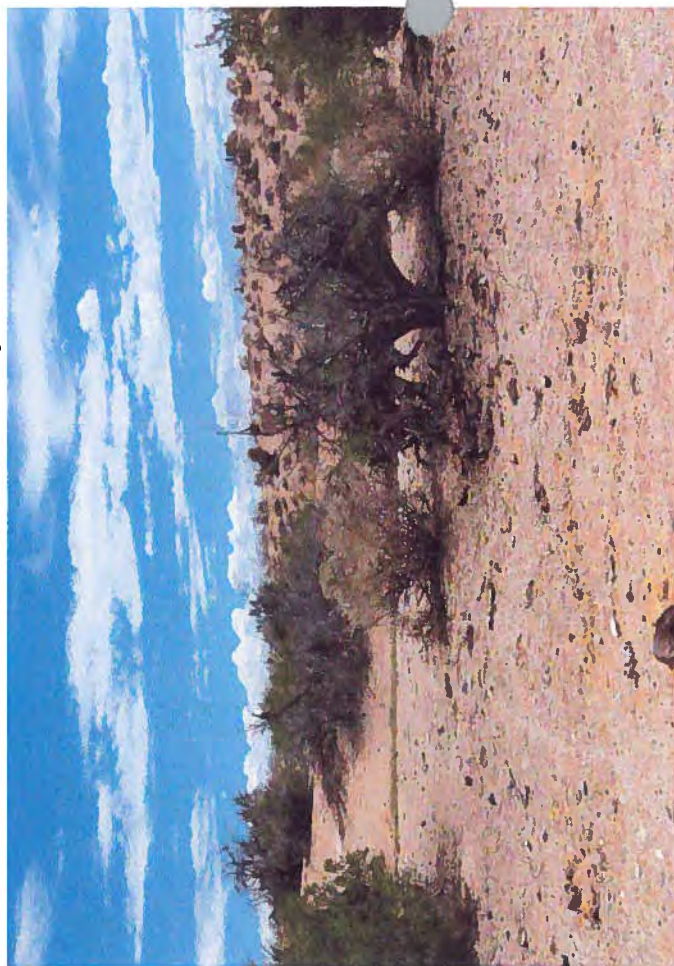
07/17/12



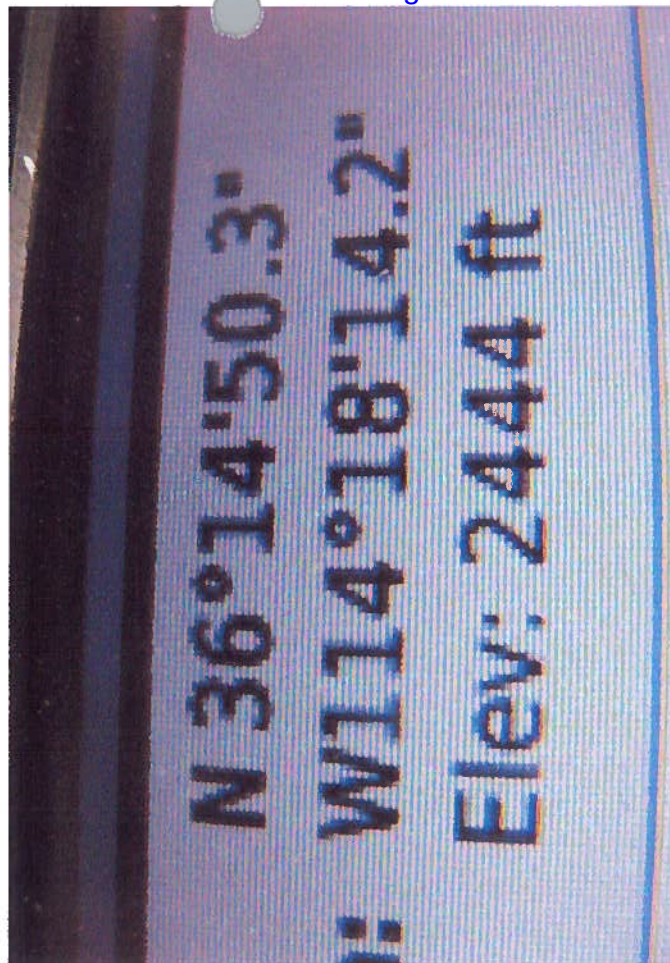
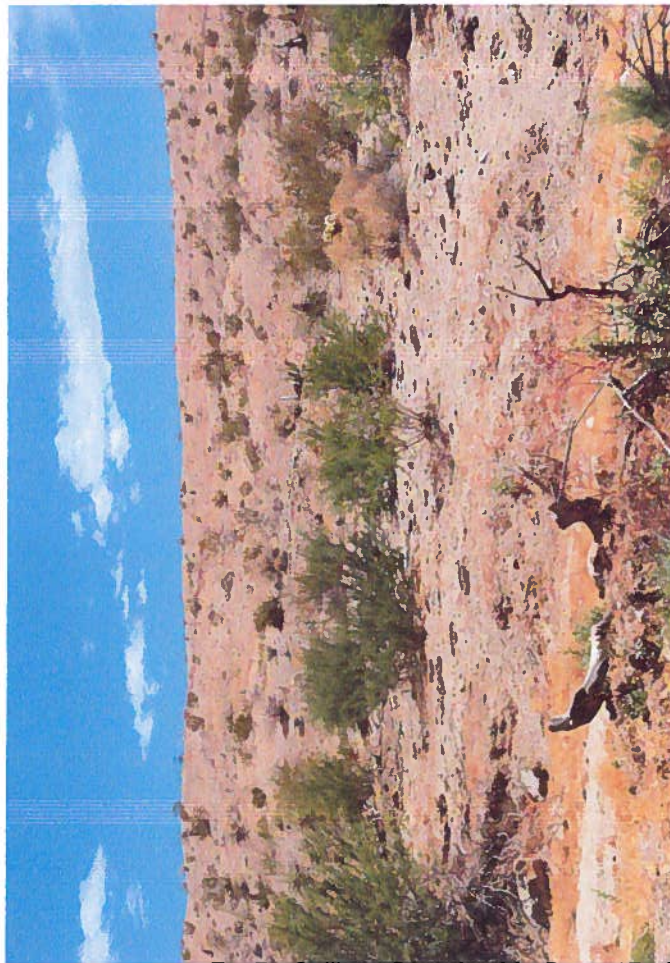
07/17/2012 1405 hrs 12 cattle, 2 calves, 1 Budy earmark - majority not visible



07/23/2012 1320 hrs. 14 catts, 2 calves, 2 cows, 2 horses, 2 camels. Reserve damage

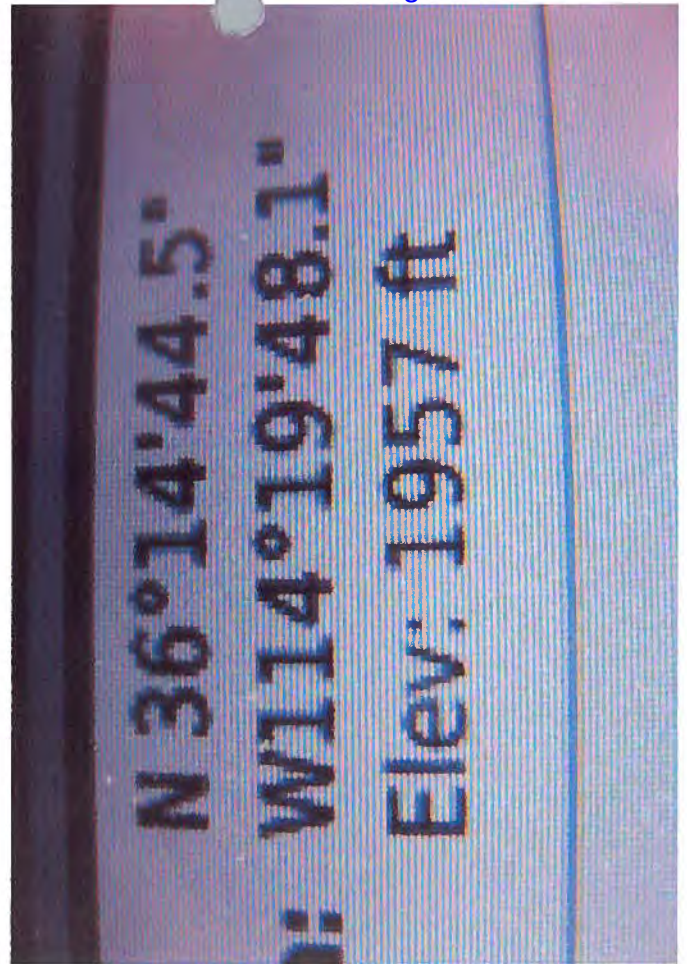
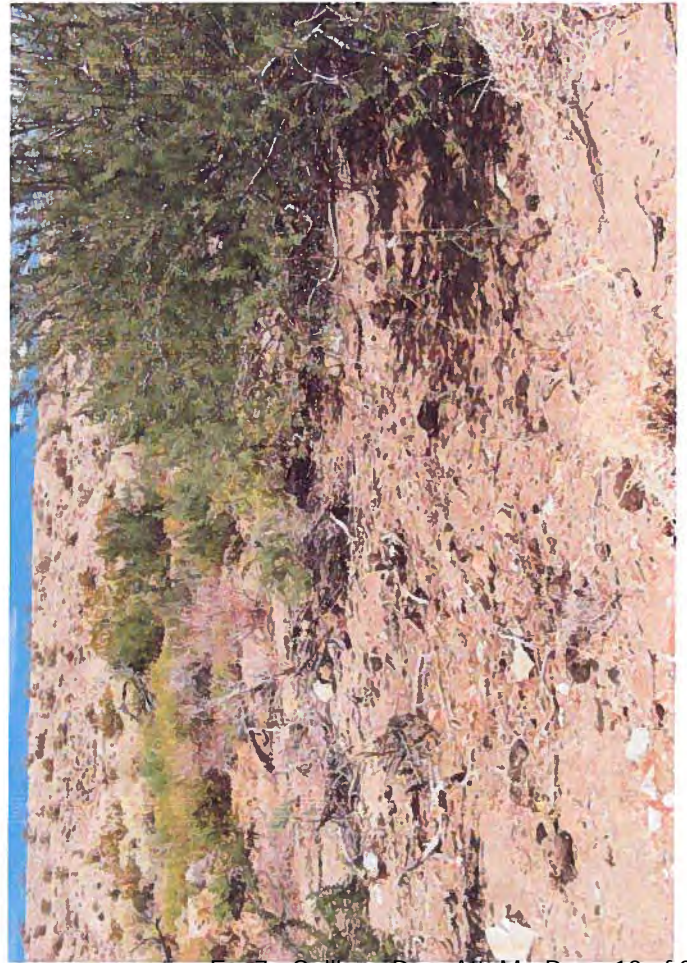


07/23/2012 1357 hrs.
Resource damage. Damaged vegetation
and denuded area from cattle
trampling.



07/23/2012 1410 hrs.

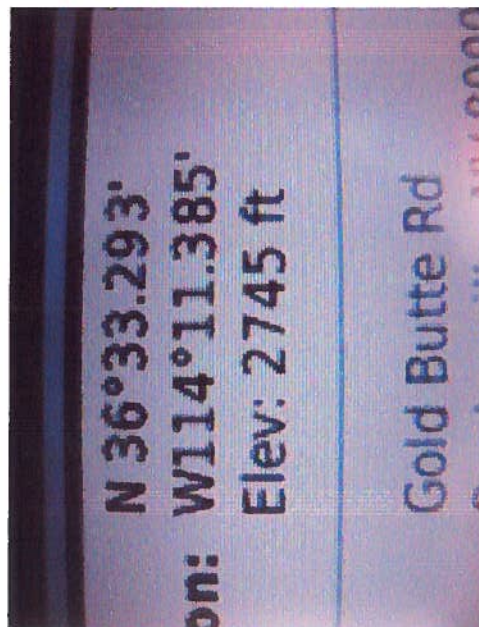
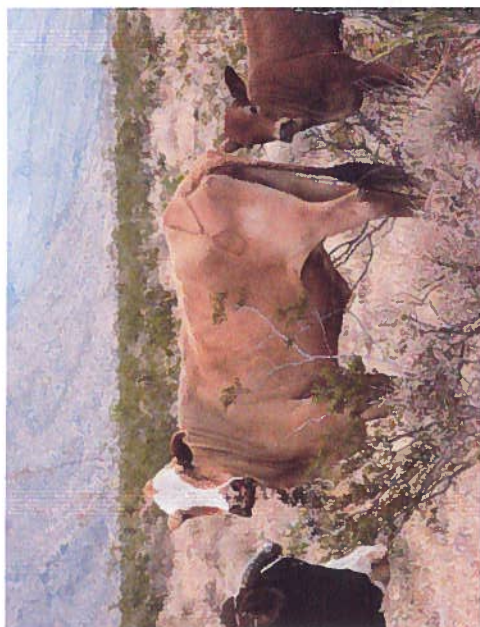
Resource damage. Damaged vegetation
and denuded area from cattle
trampling.



Bunkerville Allotment

08/01/2012 0945 hrs.

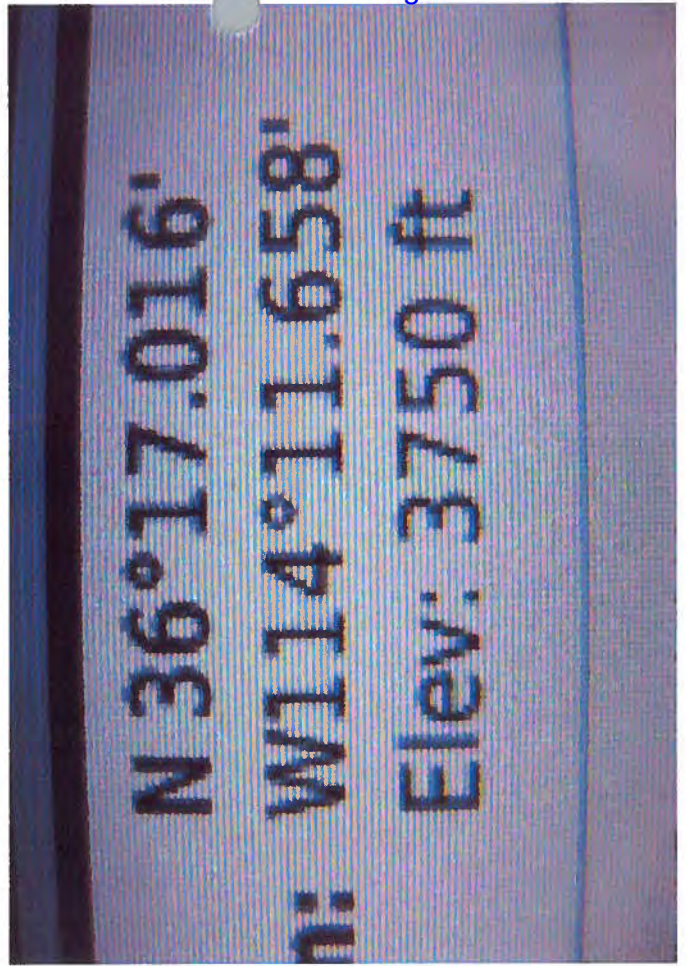
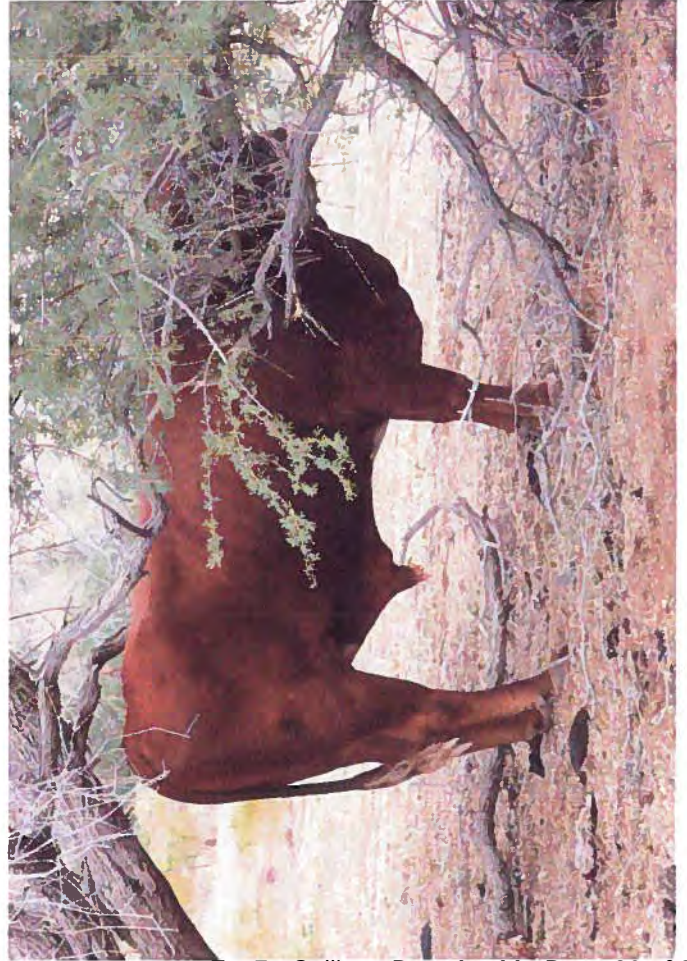
2 cattle plus 8 cattlemen
pair. 2 Bundy brand and
ear marks. 8 Bundy ear
marks.



6/8/01/2012 1100 hrs.

1 bull, no visible markings.

Resource damage - Damaged vegetation and denuded area from cattle trampling.





ScoutGuard

08.03.2012 17:59:45



ScoutGuard

08.03.2012 17:59:25





ScoutGuard

08.03.2012 18:06:56



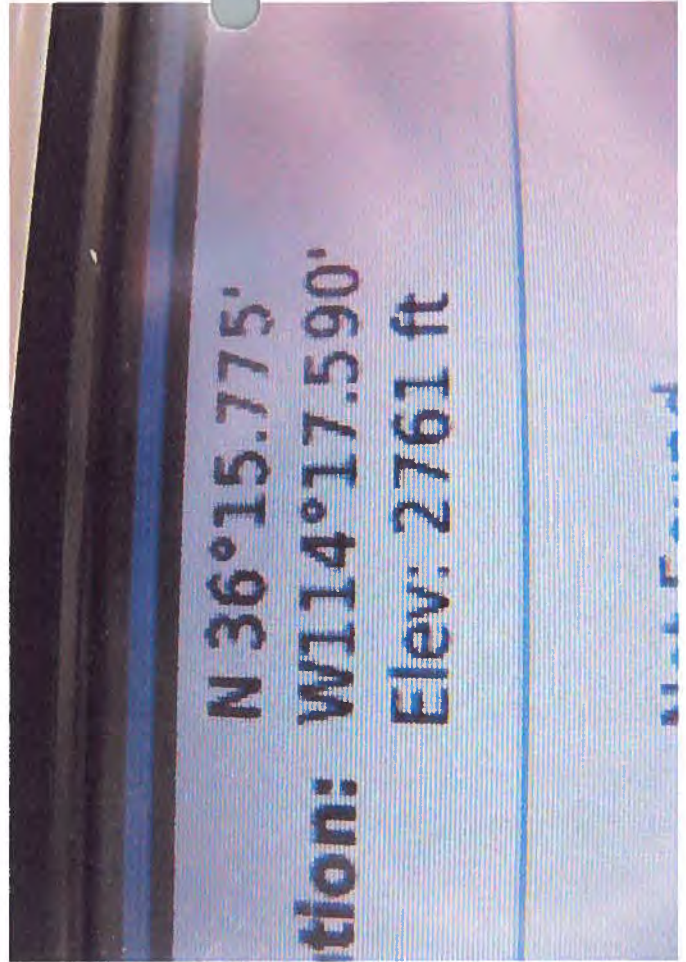
ScoutGuard

08.03.2012 18:08:01

08/09/2012 1138 hrs

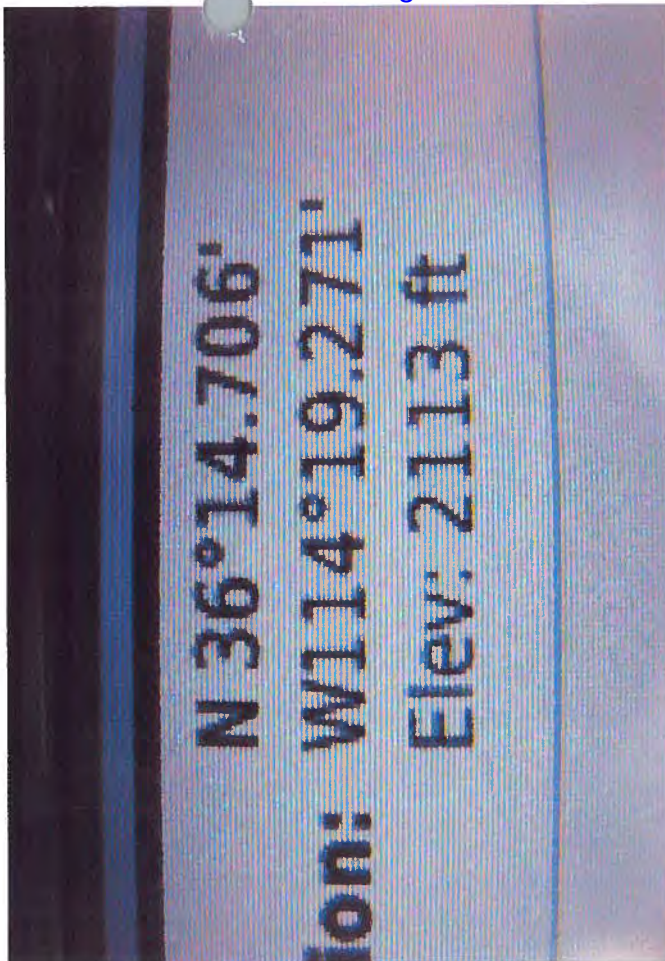
Frost salt lick

Damaged vegetation and denuded
area due to cattle trampling the
area.



08/09/2012 1214 hrs

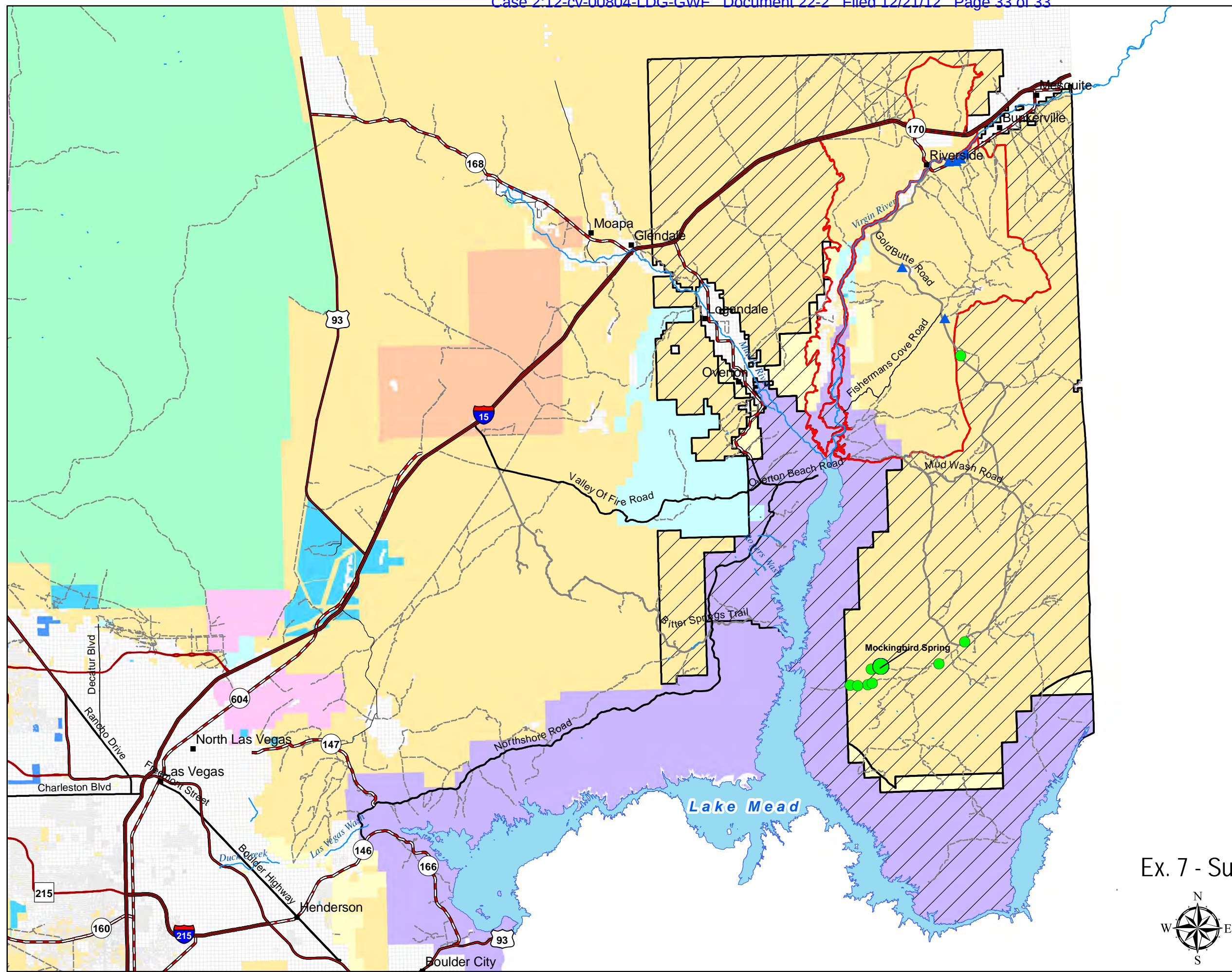
Some ailing cow with Dundy brand
and ear marks. Appears in worse
health than last sighting on 07/17/12.



ATTACHMENT N

Location of Bundy Cattle Sightings

April 17 - August 9, 2012



Legend

Cattle Location Selection	Land Status
Allotment	
▲ Inside Former Bunkerville Allotment	■ Bureau of Indian Affairs
● Outside Former Bunkerville Allotment	■ Bureau of Land Management
■ City Location	■ Bureau of Reclamation
— NHD Hydrology	■ City of Las Vegas
Major Road	■ Clark County, NV
— Interstate	■ Department of Defense
— US Highway	■ Department of Energy
— State Highway	■ Fish and Wildlife Service
— County Highway	■ Forest Service
— Arterial	■ National Park Service
— Collector	■ Nevada State
— Local	■ Private
— Back Country Byway	
— Resource	
— Restricted	
— Former Bunkerville Grazing Allotment	
— New Trespass Land	

Prepared for
 United States of America
 v. Bundy
 No. 12-cv-804
 Not intended for any other use



Ex. 7 - Sullivan Dec. Att. N - Page 1 of 1

