

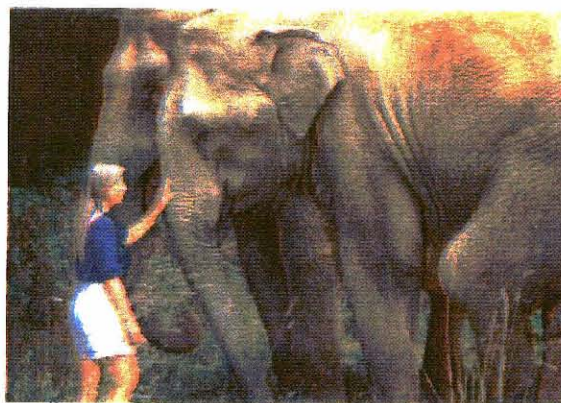
Summary of Financial Activities 2001

Public Support & Revenues	
Public support	661,987
Other revenues	90,347
	Total Public Support and Revenue
	752,334
Expenses and Losses:	
Program Services	441,327
Supporting Services	
Management and general	36,395
Fundraising	13,215
	Total supporting services
	49,610
	Total Program and Supporting Services
	490,937
Realized and Unrealized Gains and Losses on Investments	14,598
	Total Expenses and Losses
	505,535
Increase in Net Assets	246,799
Net Assets – beginning of year	1,069,557
Net Assets – end of year	\$1,316,356

Support

Major Donors

Helen Bell
 Leslie Christodouloupoulos, The Estate of Huldah Cheek Sharp
 Gary Fink
 Susan Gimbel
 Mary and Ted Moore, Chrysalis Foundation
 Hollomon Price Foundation
 James H. & Celine H. Myers
 NIB Foundation
 Susan Marion-Offield, The Offield Family Foundation
 T & T Family Foundation
 Tappedinto.com
 Tennessee Valley Authority
 The Max and Victoria Dreyfus Foundation, Inc.
 The Wiskemann Family Foundation
 Charlie Trost
 United Parcel Service
 Waller, Lansden, Dortch & Davis
 Lanette Williams



Operation of The Elephant Sanctuary would not be possible without the help of our 14,000 members, volunteers and donors who support us at every level.

Summary of Financial Activities 2004

Public Support & Revenues	
Public Support	5,156,268
Other Revenues	226,015
Total Public Support and Revenue	
5,382,283	
Expenses & Losses	
Program Services	1,507,835
Supporting Services	
Management and General	113,237
Fundraising	87,060
Total Supporting Services	200,297
Total Expenses	
1,708,132	
Increase in Net Assets <small>(\$3 Million of revenue was a result of the Capital Campaign to build the new Asian barn in 2005)</small>	3,674,151
Net Assets – beginning of year	2,988,154
Net Assets – end of year	<u>\$6,662,305</u>
<i>(Audited)</i>	

Operation of The Elephant Sanctuary would not be possible without the help of our 62,000 members, volunteers and donors who support us at every level.

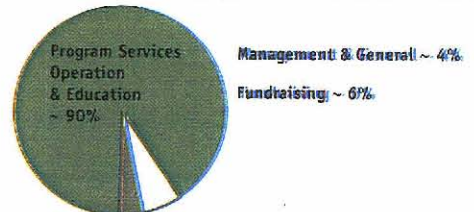
Support

Major Donors

Heather Adkins
 Animal Welfare Trust
 Laurie Bates
 Ms. Leslie Christodouloupoulos
 Mary & Ted Moore
 Chrysalis Foundation
 Janet J. Clanke
 Dr. Charles F. Colao
 William Cowan, Jr.
 Ann Tutwiler Dwyer
 Gary Fink
 Peter Storer
 George B. Storer Foundation, Inc.
 Katharyn Alvord Gerlich
 Susan Gimbel
 Serena Connelly
 Harold Simmons Foundation

Pamela W. Logan
 Nancy Oddo
 The Max & Victoria Dreyfus Foundation
 Michael McMahan
 Madeleine Higley Living Trust
 De Nyse W. T. Pinkerton
 Celine Myers
 Roberts Foundation/
 Ark Watch Foundation
 Meredith Schuman
 Speciality Coating Solutions, LLC
 Jody Stickney
 Mrs. Carole Strauss
 T & T Family Foundation
 Bert & Christa von Roemer
 The Senegeti Trading Company, LLC
 Lucille Walter

Expenses ~ based on 2005 unaudited financial records



Delhi has taught us that when an elephant is given freedom and space, their ability to recover from captivity-induced diseases such as mastitis/yellow is greatly increased.

Summary of Financial Activities 2006

Public Support & Revenues		
Public Support		3,849,478
Other Revenues		305,437
	Total Public Support and Revenue	4,154,915
Expenses & Losses		
Program Services		
Shelter and Care		1,466,482
Education		240,810
Research		73,536
	Total Program Services	1,780,828
Supporting Services		
Management and General		196,733
Fundraising		94,667
	Total Supporting Services	291,400
	Total Expenses	2,072,228
		2,082,687
Increase in Net Assets		2,082,687
Net Assets – beginning of year		9,128,381
Net Assets – end of year		\$11,211,068

(Audited)

Expenses ~ based on 2006 audited financial records



Operation of The Elephant Sanctuary would not be possible without the help of our 73,793 members, volunteers and donors who support us at every level.

Support

Major Donors

- AHMMSA Foundation
- Animal Welfare Trust
- Dean & Allison Burt
- Michael Berry
- The Body Shop Foundation
- Estate of Fredrick H. Boock
- Timothy & Jennifer Buckley & Family
- Leslie Christodouloupoulos
- Chrysalis Foundation
- Richard Cohen
- Estate of George Conner
- Estate of Gertrude Jane Huffman
- Gary Fink
- Many Fleming
- George B. Storer Foundation, Inc.
- Katharyn Alford Gerlich
- Gloria Gray
- James A "Buddy" Davidson
- Charitable Foundation
- Jan Hyden Estate
- Yvonne M. Katerman
- Kathryn Mairies Ingle Estate
- Frank. Sam Kalluy
- Lee Ann Kozak
- Pamela W. Logan
- Lufkin Family Foundation
- Malle Charitable Foundation
- Many Cooney & Edward Essel Foundation, Inc.
- Ann S. & John C. Mathews
- Newman's Own Foundation
- NIB Foundation
- Joe W. Posey
- Ruth H. Klein Trust
- Jody Stickney
- Carole Strauss
- Farid Suleman
- T & T Family Foundation
- The Ark Watch Foundation
- The Michele and Agnese Costone Foundation
- The Franklin Philanthropic Foundation
- The Gretchen Wyler Separate Property Trust
- The Maltz Family Foundation
- The Pattee Foundation, Inc.
- The Plum Foundation
- The Selma Obitz Foundation, Inc.
- The Serengeti Trading Company, LLC
- Estate of Susan McConnell West
- Carolyn Yearwood



For the third consecutive year The Elephant Sanctuary has received a 4-star rating from Charity Navigator, America's largest independent evaluator of charities. Only 9% of the charities rated by Charity Navigator have received at least three consecutive 4-star evaluations, differentiating The Elephant Sanctuary from similar non-profit organizations in its efforts to operate in the most fiscally responsible way possible. For more information, please visit charitynavigator.org.



Meets all 20 BBB Charity Standards