

Equine Slaughter Inspection

Background and Authorities

- ▶ FMIA 21 U.S.C. 604

- ▶ 9 CFR 305.2 (b)
 - Separate from any establishment that slaughters or processes cattle, sheep, swine or goats

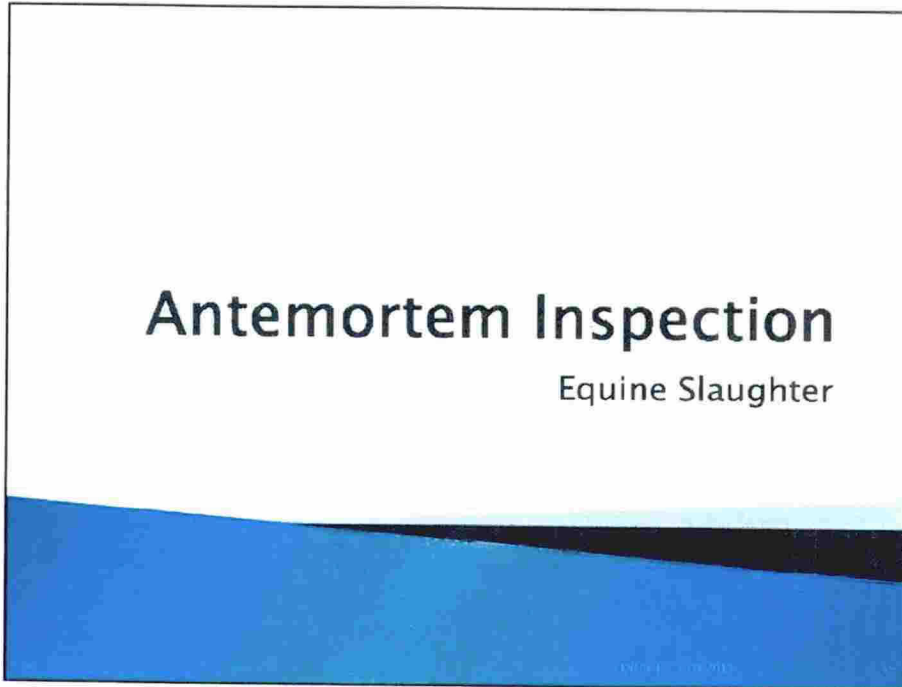
- ▶ Humane Slaughter Act of 1978

DRAFT 6-28-2013

2


Antemortem Inspection

Equine Slaughter

A slide with a white background and a blue gradient at the bottom. The title "Antemortem Inspection" is centered in a large, bold, black font. Below it, "Equine Slaughter" is written in a smaller, regular black font.

Humane Methods of Slaughter Act

- ▶ Follow instructions in Directive 6900.2 Rev.2
- ▶ Captive bolt or gun
- ▶ 9 CFR 313
- ▶ No CO₂ or electric stunning

A photograph showing a worker in a white hard hat and a plaid shirt using a captive bolt stunner on an animal. The worker is standing in a dark, industrial setting, possibly a slaughterhouse, with a concrete wall in the foreground.

DRAFT 6-28-2013 4

Humane Handling

- ▶ Verify during official hours of operation
- ▶ Unloading to slaughter
- ▶ Facilities are maintained per 9 CFR 313.1
- ▶ Humane handling of U.S. Suspects
- ▶ Humane handling of U.S. Condemned
- ▶ FSIS Directive 6900.2 Rev.2 - HATS activities

DRAFT 6-28-2013

5

Antemortem Pens

- ▶ Pens, driveways and ramps must met 9 CFR 313.1 (a)
- ▶ Elevated walkway
 - Safety
 - Useful for detecting fistulous withers



DRAFT 6-28-2013

6

Antemortem Inspection

- ▶ PHV or IPP under PHV supervision
 - FSIS Directive 6100.1
- ▶ At rest, from outside of pen
- ▶ In motion
- ▶ Segregate U. S. Suspects for PHV examination

DRAFT 6-28-2013

7

Abnormal Conditions at AM

- ▶ CNS conditions
 - Tetanus
 - Rabies
- ▶ Epitheloma
- ▶ Fistulous withers



DRAFT 6-28-2013

8

Abnormal Conditions at AM

- ▶ Lameness
- ▶ Lymphoma
- ▶ Melanoma
- ▶ Septicemia



DRAFT 6-28-2013

9

Epithelioma

- ▶ May be found in horses
- ▶ Retain for the PHV



DRAFT 6-28-2013

10

Fistulous Withers



DRAFT 6-28-2013

11

Lymphoma



DRAFT 6-28-2013

12

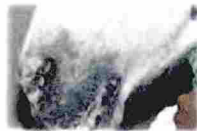
White and Grey Horses

- ▶ Melanomas common
 - Frequently seen near tail head
 - Lymph nodes in head
- ▶ Plant must identify
- ▶ Retain melanomas for PHV

DRAFT 6-28-2013

13

Melanoma



DRAFT 6-28-2013

14

Condemnable Conditions on AM

- ▶ Dead or dying
- ▶ Temperature 105° F or higher
- ▶ Comatose or semi comatose
- ▶ Other condemnable conditions

DRAFT 6-28-2013

15

Shower Spraying on Antemortem

- ▶ To control loose hair
 - Abdomen
 - Legs
 - Feet
- ▶ Must not result in dripping on exposed tissues

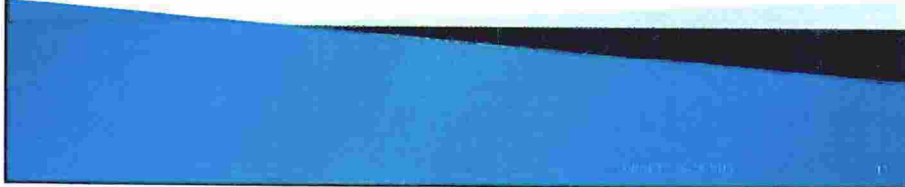


DRAFT 6-28-2013

16


Postmortem Inspection

Equine Slaughter



Bleeding

- ▶ Rails tend to be higher



DRAFT 6-28-2013 18

Head Removal

- ▶ Accomplished before or after skinning
- ▶ Head is flushed

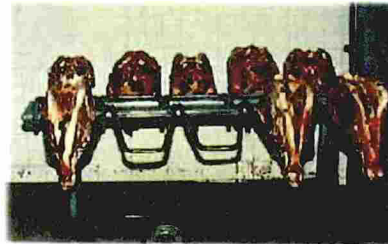


DRAFT 6-28-2013

19

Head Removal

- ▶ Presented for inspection



DRAFT 6-28-2013

20

Head Inspection

- ▶ Observe head surfaces
- ▶ Observe, palpate, incise if necessary
 - mandibular nodes
 - pharyngeal nodes
 - parotid nodes
 - guttural pouch
 - tongue

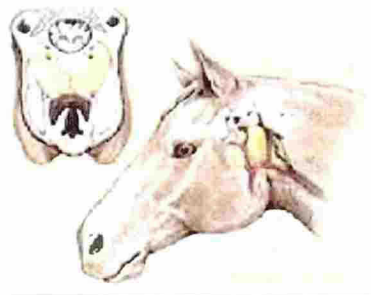


DRAFT 6-28-2013

21

Guttural Pouches

- ▶ Not found in other species
- ▶ May be infected

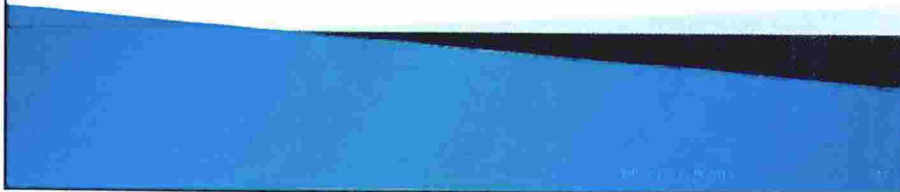


DRAFT 6-28-2013

22


Carcass Inspection

Equine Slaughter




Carcass Skinning

- ▶ Similar to beef
- ▶ White and grey horses
 - Must be identified after hide removal



DRAFT 6-28-2013 24



Special Procedures

- ▶ Withers topped on all carcasses
 - Check for fistulous withers –brucella
 - Spinous processes T-2 through T-9
 - Place in viscera pan for inspection



DRAFT 6-28-2013

25

Special Procedure for White/Grey Horses

- ▶ Shoulders dropped
 - Axillary area exposed
 - Melanosis/melanoma
- ▶ Day of slaughter
- ▶ Or next day on chilled carcasses
 - must be U.S. Retained



DRAFT 6-28-2013

26

Carcass Inspection

- ▶ Done after splitting and before wash
- ▶ Same methodology used in cattle

- Palpate superficial inguinal, or supramammary, and internal iliac lymph nodes.
- Observe body cavities.

DRAFT 6-28-2013

27

Carcass Inspection

- Observe cut surfaces of muscles and bones, diaphragm's pillars and peritoneum.
- Observe and palpate kidneys and diaphragm.
- Observe pleura, neck, and carcass exterior.

DRAFT 6-28-2013

28

Carcass Inspection

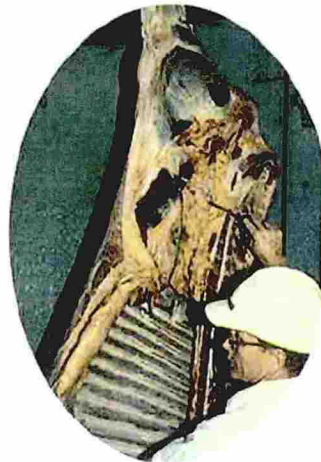
- ▶ Observe and incise if necessary
 - Inner abdominal walls for parasites
 - Spinous processes of thoracic vertebrate, supraspinous bursa, and first two cervical vertebrate for fistulas
 - Axillary and subscapular space of white/ grey horses for melanosis

DRAFT 6-28-2013

29

Typical Abnormalities at Carcass Inspection

- ▶ Arthritis
- ▶ Neoplasia
- ▶ Pyemia
- ▶ Peritonitis

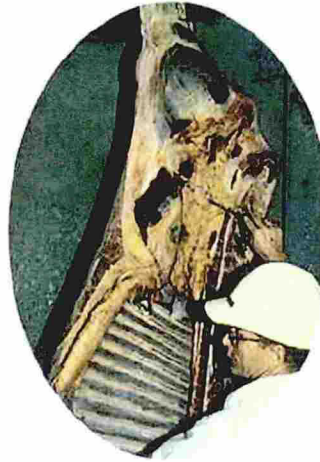


DRAFT 6-28-2013

30

Typical Abnormalities at Carcass Inspection

- ▶ Nephritis
- ▶ Parasites
- ▶ Pneumonia
- ▶ Septicemia



DRAFT 6-28-2013

31

Viscera Inspection

Equine Slaughter

DRAFT 6-28-2013

31

Viscera Inspection

- ▶ Observe and palpate lungs, bronchial, and mediastinal nodes
- ▶ Incise and observe heart
- ▶ Observe and palpate spleen, liver, and portal nodes
- ▶ Open bile duct and observe contents
- ▶ Observe rest of viscera and body cavities

DRAFT 6-28-2013

33

Residue Testing Policy

Equine Slaughter

DRAFT 6-28-2013

34

Residue Testing Policy

- ▶ Use existing residue policies in the following FSIS directives and Notices
 - FSIS Directive 10,800.1 –National Residue Program
 - FSIS Directive 10,220.3 – refer to the list of pathologies and conditions that warrant testing
 - FSIS Notice 44-12– Residue Repeat Violator List – applies to horse slaughter

DRAFT 6-28-2013

35

Limitations of Inplant Residue Test

- ▶ Presence of drugs not approved for food animals, including equine
- ▶ Most drugs used are not antimicrobials
- ▶ KIS™ Test will not detect commonly used drugs in equine
- ▶ Submitted tissues will undergo complete analysis at specified FSIS Laboratory

DRAFT 6-28-2013

36

Two Types of Residue Testing

- ▶ Suspect Animals
 - Antemortem
 - Postmortem
 - Use FSIS Directive 10,220.3
- ▶ Random Sampling of normal animals on lot basis
- ▶ Retain carcasses until results are reported

DRAFT 6-28-2013

17

Suspect Animals

- ▶ Select carcasses when observations suggest recent drug treatment
 - Antemortem or postmortem findings
 - FSIS Directive 10,800.1 – Procedures for Residue Sampling, Testing for the National Residue Program
 - FSIS Directive 10.200.3 – list of pathologies and conditions that warrant residue testing
 - FSIS Notice 44-12 Residue Repeat Violators List

DRAFT 6-28-2013

18

Random Sampling on Lot Basis

- ▶ Every lot of horses passing ante-mortem is tested at the following rate:

Minimum # in lot	Minimum # of test
1-10 horses	Select 1 carcass
11- 50 horses	Select 2 carcasses
51-100 horses	Select 3 carcasses
More than 100 horses	Select 4 carcasses

DRAFT 6-28-2013

19

Submitting Residue Samples

- ▶ For each animal selected for residue sampling
- ▶ Collect two (2) 1lb. muscle samples
- ▶ Submit 1 lb. muscle sample to the Western Lab
 - Western Lab- CG_EQUINE_WL
- ▶ Submit 1 lb. muscle sample to the Eastern Lab
 - Eastern Lab- CG_EQUINE_EL

DRAFT 6-28-2013

40

Residue Testing Policy

- ▶ Verify Establishment Profile includes slaughter class "GOAT"
- ▶ Add "Goat" slaughter class if necessary
- ▶ All equine data will be entered under "Goat" until directed by District Office
- ▶ Refer to FSIS PHIS Directive 5300.1
 - Managing the Establishment Profile in PHIS

DRAFT 6-28-2013

41

Residue Testing Policy

- ▶ Inspector Generated Residue Samples
- ▶ Follow instructions in FSIS PHIS Directive 13,000.2
 - Performing Sampling Tasks in PHIS
- ▶ FSIS Notice 58-12
 - Scheduling and Submitting Lab Samples in PHIS

DRAFT 6-28-2013

42

Sample Results/Documentation

- ▶ Provide a copy of the test results to the establishment
- ▶ “Not Detected” – release carcass and parts
- ▶ “Detected-violative” – condemn carcass and parts
- ▶ Notify establishment of violations, trends, final dispositions at weekly meetings
- ▶ Document in MOI

DRAFT 6-28-2013

43

Sample Results/Dispositions

- ▶ Access LEARN for sample results
- ▶ Follow Disposition Guide in FSIS Directive 10,800.1
- ▶ Few drugs approved for use in horses intended for human food
- ▶ Condemn carcass/parts as necessary


DRAFT 6-28-2013

44

Marking of Equine Products

Marking of Equine Products

- ▶ 9 CFR 312.3 Legend
- ▶ 9 CFR 316.5(e) Ink color
- ▶ 9 CFR 316.12 Requirements



DRAFT 6-28-2013 46



Questions